

Anti-Frizzled-7 antibody (STJ93151)

STJ93151

GENERAL INFORMATION

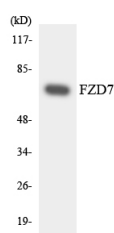
Product Type	Primary antibodies
Short Description	Rabbit polyclonal anti-Frizzled-7 antibody is suitable for use in Western Blot, Immunofluorescence and ELISA.
Background	
Applications	WB, IF, ELISA
Host/Source	Rabbit
Reactivity	Human, Mouse

PRODUCT PROPERTIES

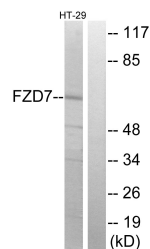
Clonality	Polyclonal
Clone ID	
Concentration	1 mg/ml
Conjugation	Unconjugated
Purification	The antibody was affinity-purified from rabbit antiserum by affinity-chromatography using a epitope-specific immunogen.
Dilution Range	WB 1:500-1:2000 IF 1:200-1:1000 ELISA 1:20000
Formulation	Liquid in PBS containing 50% glycerol, 0.5% BSA and 0.02% sodium azide.
Isotype	IgG
Storage Instruction	Store at -20°C, and avoid repeat freeze-thaw cycles.

TARGET INFORMATION

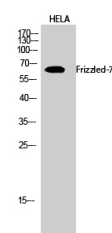
Gene ID	8324
Gene Symbol	FZD7
Uniprot ID	FZD7_HUMAN
Immunogen	Synthesized peptide derived from human Frizzled-7
Immunogen Region	20-100 aa, N-terminal
Specificity	Frizzled-7 polyclonal antibody detects endogenous levels of Frizzled-7 protein.
Immunogen Sequence	



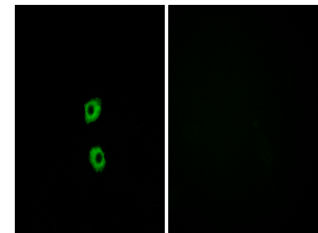
Western blot analysis of the lysates from HUVEC cells using FZD7 antibody.



Western blot analysis of lysates from HT-29 cells, using FZD7 Antibody. The lane on the right is blocked with the synthesized peptide.



Western blot analysis of HELA cells using Frizzled-7 Polyclonal Antibody diluted at 1: 2000



Immunofluorescence analysis of MCF7 cells, using FZD7 Antibody. The picture on the right is blocked with the synthesized peptide.

This product is suitable for in-vitro studies under the RESEARCH USE ONLY [RUO] licence. This product must not be used as for diagnostic or other medical purposes.
St John's Laboratory Ltd, Knowledge Dock Business Centre, University Way, London, E16 2RD | Tel: 0208 223 3081 | Fax: 0207 681 2580