

Anti-FZD6 antibody (90-170 Internal) (STJ93150)

STJ93150

GENERAL INFORMATION

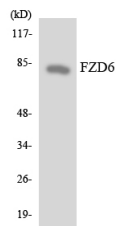
Product Type	Primary antibodies
Short Description	Rabbit polyclonal antibody anti-Frizzled-6 (90-170 Internal) is suitable for use in Western Blot, Immunohistochemistry, Immunofluorescence, Immunocytochemistry and ELISA research applications.
Applications	WB, IHC-P, IF, ICC, ELISA
Host/Source	Rabbit
Reactivity	Human, Rat, Mouse

PRODUCT PROPERTIES

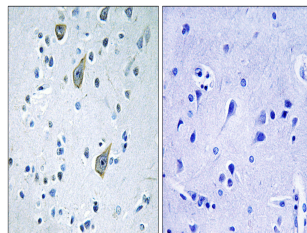
Clonality	Polyclonal
Clone ID	
Concentration	1 mg/mL
Conjugation	Unconjugated
Purification	The antibody was affinity-purified from rabbit anti-serum by affinity-chromatography.
Dilution Range	WB 1:500-1:2000 IHC 1:100-1:300 IF 1:200-1:1000 ELISA 1:5000
Formulation	PBS, 50% Glycerol, 0.5% BSA and 0.02% Sodium Azide.
Isotype	IgG
Storage Instruction	Store at -20°C for up to 1 year from the date of receipt, and avoid repeat freeze-thaw cycles.

TARGET INFORMATION

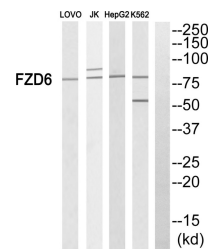
Gene ID	8323
Gene Symbol	FZD6
Uniprot ID	FZD6_HUMAN
Immunogen	The antiserum was produced against synthesized peptide derived from human FZD6 at amino acid range 116-165
Immunogen Region	90-170 Internal
Specificity	FZD6 polyclonal antibody (Frizzled-6) binds to endogenous Frizzled-6 at the amino acid region 90-170 Internal.
Immunogen Sequence	



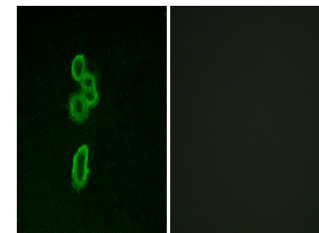
Western blot analysis of the lysates from 293 cells using FZD6 antibody.



Immunohistochemistry analysis of paraffin-embedded human brain tissue, using FZD6 Antibody. The picture on the right is blocked with the synthesized peptide.



Western blot analysis of FZD6 Antibody. The lane on the right is blocked with the FZD6 peptide.



Immunofluorescence analysis of MCF7 cells, using FZD6 Antibody. The picture on the right is blocked with the synthesized peptide.

This product is suitable for in-vitro studies under the RESEARCH USE ONLY [RUO] licence. This product must not be used as for diagnostic or other medical purposes.
St John's Laboratory Ltd, Knowledge Dock Business Centre, University Way, London, E16 2RD | Tel: 0208 223 3081