

Anti-FZD2 antibody (180-260 Internal) (STJ93141)

STJ93141

GENERAL INFORMATION

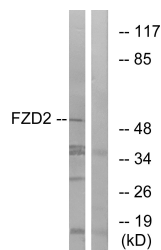
Product Type	Primary antibodies
Short Description	Rabbit polyclonal antibody anti-Frizzled-2 (180-260 Internal) is suitable for use in Western Blot, Immunofluorescence, Immunocytochemistry and ELISA research applications.
Applications	WB, IF, ICC, ELISA
Host/Source	Rabbit
Reactivity	Human, Mouse, Rat

PRODUCT PROPERTIES

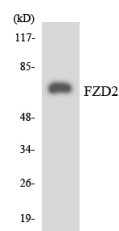
Clonality	Polyclonal
Clone ID	
Concentration	1 mg/mL
Conjugation	Unconjugated
Purification	The antibody was affinity-purified from rabbit anti-serum by affinity-chromatography.
Dilution Range	WB 1:500-1:2000 IF 1:200-1:1000 ELISA 1:40000
Formulation	PBS, 50% Glycerol, 0.5% BSA and 0.02% Sodium Azide.
Isotype	IgG
Storage Instruction	Store at -20°C for up to 1 year from the date of receipt, and avoid repeat freeze-thaw cycles.

TARGET INFORMATION

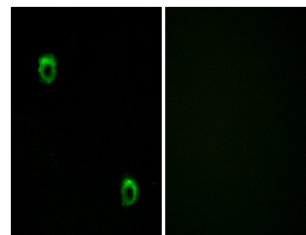
Gene ID	2535
Gene Symbol	FZD2
Uniprot ID	FZD2_HUMAN
Immunogen	The antiserum was produced against synthesized peptide derived from human FZD2 at amino acid range 201-250
Immunogen Region	180-260 Internal
Specificity	FZD2 polyclonal antibody (Frizzled-2) binds to endogenous Frizzled-2 at the amino acid region 180-260 Internal.
Immunogen Sequence	



Western blot analysis of lysates from HeLa cells, using FZD2 Antibody. The lane on the right is blocked with the synthesized peptide.



Western blot analysis of the lysates from HepG2 cells using FZD2 antibody.



Immunofluorescence analysis of MCF7 cells, using FZD2 Antibody. The picture on the right is blocked with the synthesized peptide.