

Anti-FZD1 antibody (30-110 N-Term) (STJ93139)

STJ93139

GENERAL INFORMATION

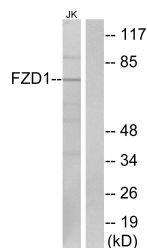
Product Type	Primary antibodies
Short Description	Rabbit polyclonal antibody anti-Frizzled-1 (30-110 N-Term) is suitable for use in Western Blot, Immunofluorescence, Immunocytochemistry and ELISA research applications.
Applications	WB, IF, ICC, ELISA
Host/Source	Rabbit
Reactivity	Human, Rat, Mouse

PRODUCT PROPERTIES

Clonality	Polyclonal
Clone ID	
Concentration	1 mg/mL
Conjugation	Unconjugated
Purification	The antibody was affinity-purified from rabbit anti-serum by affinity-chromatography.
Dilution Range	WB 1:500-1:2000 IF 1:200-1:1000 ELISA 1:20000
Formulation	PBS, 50% Glycerol, 0.5% BSA and 0.02% Sodium Azide.
Isotype	IgG
Storage Instruction	Store at -20°C for up to 1 year from the date of receipt, and avoid repeat freeze-thaw cycles.

TARGET INFORMATION

Gene ID	8321
Gene Symbol	FZD1
Uniprot ID	FZD1_HUMAN
Immunogen	The antiserum was produced against synthesized peptide derived from human FZD1 at amino acid range 16-65
Immunogen Region	30-110 N-Term
Specificity	FZD1 polyclonal antibody (Frizzled-1) binds to endogenous Frizzled-1 at the amino acid region 30-110 N-Term.
Immunogen Sequence	



Western blot analysis of lysates from Jurkat cells, using FZD1 Antibody. The lane on the right is blocked with the synthesized peptide.