

## Anti-FPR1 antibody (130-210 Internal) (STJ93133)

STJ93133

### GENERAL INFORMATION

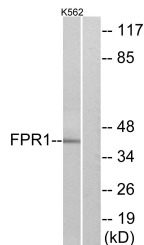
|                          |  |
|--------------------------|--|
| <b>Product Type</b>      | Primary antibodies   |
| <b>Short Description</b> | Rabbit polyclonal antibody anti-Fmet-Leu-Phe Receptor (130-210 Internal) is suitable for use in Western Blot, Immunohistochemistry, Immunofluorescence, Immunocytochemistry and ELISA research applications. |
| <b>Applications</b>      | WB, IHC-P, IF, ICC, ELISA  |
| <b>Host/Source</b>       | Rabbit   |
| <b>Reactivity</b>        | Human, Rat, Mouse  |

### PRODUCT PROPERTIES

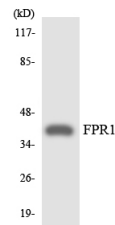
|                            |  |
|----------------------------|--|
| <b>Clonality</b>           | Polyclonal   |
| <b>Clone ID</b>            |  |
| <b>Concentration</b>       | 1 mg/mL  |
| <b>Conjugation</b>         | Unconjugated   |
| <b>Purification</b>        | The antibody was affinity-purified from rabbit anti-serum by affinity-chromatography.          |
| <b>Dilution Range</b>      | WB 1:500-1:2000<br>IHC 1:100-1:300<br>IF 1:200-1:1000<br>ELISA 1:5000                          |
| <b>Formulation</b>         | PBS, 50% Glycerol, 0.5% BSA and 0.02% Sodium Azide.  |
| <b>Isotype</b>             | IgG  |
| <b>Storage Instruction</b> | Store at -20°C for up to 1 year from the date of receipt, and avoid repeat freeze-thaw cycles. |

### TARGET INFORMATION

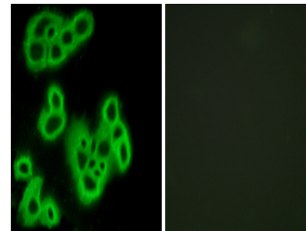
|                           |   |
|---------------------------|---|
| <b>Gene ID</b>            | 2357  |
| <b>Gene Symbol</b>        | FPR1  |
| <b>Uniprot ID</b>         | FPR1_HUMAN  |
| <b>Immunogen</b>          | The antiserum was produced against synthesized peptide derived from human FPR1 at amino acid range 155-204                            |
| <b>Immunogen Region</b>   | 130-210 Internal  |
| <b>Specificity</b>        | FPR1 polyclonal antibody (Fmet-Leu-Phe Receptor) binds to endogenous Fmet-Leu-Phe Receptor at the amino acid region 130-210 Internal. |
| <b>Immunogen Sequence</b> |   |



Western blot analysis of lysates from K562 cells, using FPR1 Antibody. The lane on the right is blocked with the synthesized peptide.



Western blot analysis of the lysates from COLO205 cells using FPR1 antibody.



Immunofluorescence analysis of MCF7 cells, using FPR1 Antibody. The picture on the right is blocked with the synthesized peptide.

This product is suitable for in-vitro studies under the RESEARCH USE ONLY [RUO] licence. This product must not be used as for diagnostic or other medical purposes.  
St John's Laboratory Ltd, Knowledge Dock Business Centre, University Way, London, E16 2RD | Tel: 0208 223 3081