

Anti-FOXO3 antibody (190-270) (STJ93128)

STJ93128

GENERAL INFORMATION

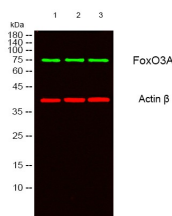
| | |
|--------------------------|---|
| Product Type | Primary antibodies |
| Short Description | Rabbit polyclonal antibody anti-Forkhead Box Protein O3 (190-270) is suitable for use in Western Blot, Immunohistochemistry, Immunofluorescence, Immunocytochemistry and ELISA research applications. |
| Applications | WB, IHC-P, IF, ICC, ELISA |
| Host/Source | Rabbit |
| Reactivity | Human, Mouse, Rat |

PRODUCT PROPERTIES

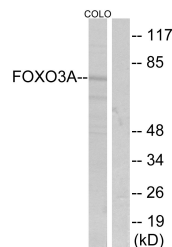
| | |
|----------------------------|--|
| Clonality | Polyclonal |
| Clone ID | |
| Concentration | 1 mg/mL |
| Conjugation | Unconjugated |
| Purification | The antibody was affinity-purified from rabbit anti-serum by affinity-chromatography. |
| Dilution Range | WB 1:500-1:2000 IHC 1:100-1:300 IF 1:200-1:1000 ELISA 1:20000 |
| Formulation | PBS, 50% Glycerol, 0.5% BSA and 0.02% Sodium Azide. |
| Isotype | IgG |
| Storage Instruction | Store at -20°C for up to 1 year from the date of receipt, and avoid repeat freeze-thaw cycles. |

TARGET INFORMATION

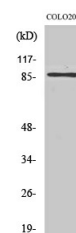
| | |
|---------------------------|---|
| Gene ID | 2309 |
| Gene Symbol | FOXO3 |
| Uniprot ID | FOXO3_HUMAN |
| Immunogen | The antiserum was produced against synthesized peptide derived from human FKHL1 at amino acid range 220-269 |
| Immunogen Region | 190-270 |
| Specificity | FOXO3 polyclonal antibody (Forkhead Box Protein O3) binds to endogenous Forkhead Box Protein O3 at the amino acid region 190-270. |
| Immunogen Sequence | |



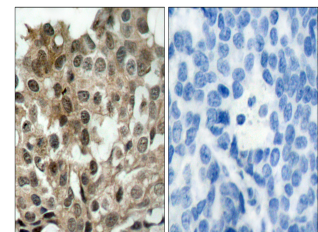
Western blot analysis of lysates from 1) MCF-7, 2) COLO205, 3) HELA cells. (Green) primary antibody was diluted at 1:1000, 4°C over night, secondary antibody (cat: NA) was diluted at 1:10000, 37°C 1hour. (Red) Actin Beta monoclonal antibody (5B7) (cat: ST-96930) antibody was diluted at 1:5000 as loading control, 4°C over night, secondary antibody (cat: NA) was diluted at 1:10000, 37°C 1hour.



Western blot analysis of lysates from COLO205 cells, treated with serum, using FKHL1 Antibody. The lane on the right is blocked with the synthesized peptide.



Western blot analysis of Jurkat cells using FoxO3A Polyclonal Antibody diluted at 1: 1000



Immunohistochemistry analysis of paraffin-embedded human breast carcinoma tissue, using FKHL1 Antibody. The picture on the right is blocked with the synthesized peptide.

This product is suitable for in-vitro studies under the RESEARCH USE ONLY [RUO] licence. This product must not be used as for diagnostic or other medical purposes.

St John's Laboratory Ltd, Knowledge Dock Business Centre, University Way, London, E16 2RD | Tel: 0208 223 3081