

Anti-FOXX1 antibody (650-730 C-Term) (STJ93118)

STJ93118

GENERAL INFORMATION

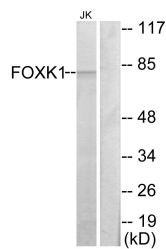
Product Type	Primary antibodies
Short Description	Rabbit polyclonal antibody anti-Forkhead Box Protein K1 (650-730 C-Term) is suitable for use in Western Blot, Immunohistochemistry, Immunofluorescence and ELISA research applications.
Applications	WB, IHC-P, IF-P, ELISA
Host/Source	Rabbit
Reactivity	Human, Mouse

PRODUCT PROPERTIES

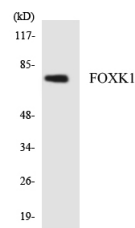
Clonality	Polyclonal
Clone ID	
Concentration	1 mg/mL
Conjugation	Unconjugated
Purification	The antibody was affinity-purified from rabbit anti-serum by affinity-chromatography.
Dilution Range	WB 1:500-1:2000 IHC 1:100-1:300 ELISA 1:20000
Formulation	PBS, 50% Glycerol, 0.5% BSA and 0.02% Sodium Azide.
Isotype	IgG
Storage Instruction	Store at -20°C for up to 1 year from the date of receipt, and avoid repeat freeze-thaw cycles.

TARGET INFORMATION

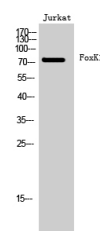
Gene ID	221937
Gene Symbol	FOXX1
Uniprot ID	FOXX1_HUMAN
Immunogen	The antiserum was produced against synthesized peptide derived from human FOXX1 at amino acid range 681-730
Immunogen Region	650-730 C-Term
Specificity	FOXX1 polyclonal antibody (Forkhead Box Protein K1) binds to endogenous Forkhead Box Protein K1 at the amino acid region 650-730 C-Term.
Immunogen Sequence	



Western blot analysis of lysates from Jurkat cells, using FOXX1 Antibody. The lane on the right is blocked with the synthesized peptide.



Western blot analysis of the lysates from K562 cells using FOXX1 antibody.



Western blot analysis of Jurkat cells using FoxK1 Polyclonal Antibody cells nucleus extracted by Minute™ Cytoplasmic and Nuclear Fractionation kit (SC-003, InventiBiotech, MN, USA).