

Anti-FOXD4L1 antibody (320-400 C-Term) (STJ93111)

STJ93111

GENERAL INFORMATION

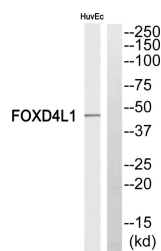
Product Type	Primary antibodies
Short Description	Rabbit polyclonal antibody anti-Forkhead Box Protein D4-Like 1 (320-400 C-Term) is suitable for use in Western Blot and ELISA research applications.
Applications	WB, ELISA
Host/Source	Rabbit
Reactivity	Human, Rat, Mouse

PRODUCT PROPERTIES

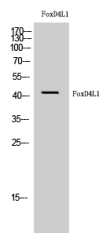
Clonality	Polyclonal
Clone ID	
Concentration	1 mg/mL
Conjugation	Unconjugated
Purification	The antibody was affinity-purified from rabbit anti-serum by affinity-chromatography.
Dilution Range	WB 1:500-1:2000 ELISA 1:40000
Formulation	PBS, 50% Glycerol, 0.5% BSA and 0.02% Sodium Azide.
Isotype	IgG
Storage	Store at -20°C for up to 1 year from the date of receipt, and avoid repeat freeze-thaw cycles.
Instruction	

TARGET INFORMATION

Gene ID	200350
Gene Symbol	FOXD4L1
Uniprot ID	FX4L1_HUMAN
Immunogen	Synthesized peptide derived from FoxD4L1. at amino acid range: 320-400
Immunogen Region	320-400 C-Term
Specificity	FOXD4L1 polyclonal antibody (Forkhead Box Protein D4-Like 1) binds to endogenous Forkhead Box Protein D4-Like 1 at the amino acid region 320-400 C-Term.
Immunogen Sequence	



Western blot analysis of FOXD4L1 Antibody. The lane on the right is blocked with the FOXD4L1 peptide.



Western blot analysis of HuvEc cells using FoxD4L1 Polyclonal Antibody cells nucleus extracted by Minute TM Cytoplasmic and Nuclear Fractionation kit (SC-003, Inventiotech, MN, USA).

This product is suitable for in-vitro studies under the RESEARCH USE ONLY [RUO] licence. This product must not be used as for diagnostic or other medical purposes.
St John's Laboratory Ltd, Knowledge Dock Business Centre, University Way, London, E16 2RD | Tel: 0208 223 3081