

## Anti-FoxD4/D4L antibody (250-330 Internal) (STJ93110)

STJ93110

### GENERAL INFORMATION

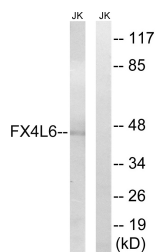
<b>Product Type</b>	Primary antibodies
<b>Short Description</b>	Rabbit polyclonal antibody anti-Forkhead box protein D4 and Forkhead box protein D4-like 4 and Forkhead box protein D4-like 5 and Forkhead box protein D4-like 4 and Forkhead box protein D4-like 3 and Forkhead box protein D4-like 6 (250-330 Internal)
<b>Applications</b>	WB, ELISA
<b>Host/Source</b>	Rabbit
<b>Reactivity</b>	Human, Rat, Mouse

### PRODUCT PROPERTIES

<b>Clonality</b>	Polyclonal
<b>Clone ID</b>	
<b>Concentration</b>	1 mg/mL
<b>Conjugation</b>	Unconjugated
<b>Purification</b>	The antibody was affinity-purified from rabbit anti-serum by affinity-chromatography.
<b>Dilution</b>	WB 1:500-1:2000
<b>Range</b>	ELISA 1:40000
<b>Formulation</b>	PBS, 50% Glycerol, 0.5% BSA and 0.02% Sodium Azide.
<b>Isotype</b>	IgG
<b>Storage</b>	Store at -20°C for up to 1 year from the date of receipt, and avoid repeat freeze-thaw cycles.
<b>Instruction</b>	

### TARGET INFORMATION

<b>Gene ID</b>	<a href="#">286380</a> <a href="#">2298</a> <a href="#">349334</a>
<b>Gene Symbol</b>	<a href="#">FOXD4L3</a> <a href="#">FOXD4</a> <a href="#">FX4L3_HUMAN</a> <a href="#">FOXD4_HUMAN</a> <a href="#">FX4L4_HUMAN</a>
<b>Immunogen</b>	The antiserum was produced against synthesized peptide derived from human FOXD4/L2/L3/L4/L5/L6 at amino acid range 281-330
<b>Immunogen Region</b>	250-330 Internal
<b>Specificity</b>	FoxD4/D4L polyclonal antibody (Forkhead box protein D4 and Forkhead box protein D4-like 4 and Forkhead box protein D4-like 5 and Forkhead box protein D4-like 4 and Forkhead box protein D4-like 3 and Forkhead box protein D4-like 6) binds to endogenous
<b>Immunogen Sequence</b>	



Western blot analysis of lysates from Jurkat cells, using FOXD4/L2/L3/L4/L5/L6 Antibody. The lane on the right is blocked with the synthesized peptide.

This product is suitable for in-vitro studies under the RESEARCH USE ONLY [RUO] licence. This product must not be used as for diagnostic or other medical purposes.  
 St John's Laboratory Ltd, Knowledge Dock Business Centre, University Way, London, E16 2RD | Tel: 0208 223 3081