

Anti-FoxC1/2 antibody (120-200 Internal) (STJ93107)

STJ93107

GENERAL INFORMATION

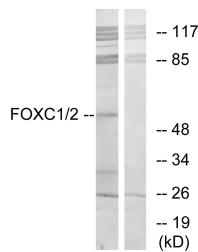
Product Type	Primary antibodies
Short Description	Rabbit polyclonal antibody anti-Forkhead box protein C1 and Forkhead box protein C2 (120-200 Internal) is suitable for use in Western Blot, Immunohistochemistry, Immunofluorescence, Immunocytochemistry and ELISA research applications.
Applications	WB, IHC-P, IF, ICC, ELISA
Host/Source	Rabbit
Reactivity	Human, Mouse, Rat

PRODUCT PROPERTIES

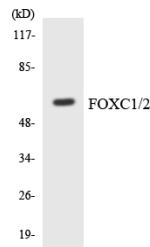
Clonality	Polyclonal
Clone ID	
Concentration	1 mg/mL
Conjugation	Unconjugated
Purification	The antibody was affinity-purified from rabbit anti-serum by affinity-chromatography.
Dilution Range	WB 1:500-1:2000 IHC 1:100-1:300 IF 1:200-1:1000 ELISA 1:40000
Formulation	PBS, 50% Glycerol, 0.5% BSA and 0.02% Sodium Azide.
Isotype	IgG
Storage Instruction	Store at -20°C for up to 1 year from the date of receipt, and avoid repeat freeze-thaw cycles.

TARGET INFORMATION

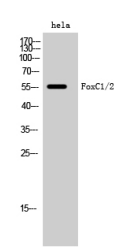
Gene ID	2296 2303
Gene Symbol	FOXC1 FOXC2
Uniprot ID	FOXC1_HUMAN FOXC2_HUMAN
Immunogen	The antiserum was produced against synthesized peptide derived from human FOXC1/2 at amino acid range 151-200
Immunogen Region	120-200 Internal
Specificity	FoxC1/2 polyclonal antibody (Forkhead box protein C1 and Forkhead box protein C2) binds to endogenous Forkhead box protein C1 and Forkhead box protein C2 at the amino acid region 120-200 Internal.
Immunogen Sequence	



Western blot analysis of lysates from RAW264.7 cells, using FOXC1/2 Antibody. The lane on the right is blocked with the synthesized peptide.



Western blot analysis of the lysates from Jurkat cells using FOXC1/2 antibody.



Western blot analysis of HeLa cells using FoxC1/2 Polyclonal Antibody diluted at 1: 2000 cells nucleus extracted by Minute TM Cytoplasmic and Nuclear Fractionation kit (SC-003, Inventibiotech, MN, USA).

This product is suitable for in-vitro studies under the RESEARCH USE ONLY [RUO] licence. This product must not be used as for diagnostic or other medical purposes.
St John's Laboratory Ltd, Knowledge Dock Business Centre, University Way, London, E16 2RD | Tel: 0208 223 3081