

Anti-FoxB1/2 antibody (30-110 Internal) (STJ93105)

STJ93105

GENERAL INFORMATION

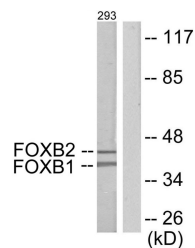
Product Type	Primary antibodies
Short Description	Rabbit polyclonal antibody anti-Forkhead box protein B1 and Forkhead box protein B2 (30-110 Internal) is suitable for use in Western Blot, Immunohistochemistry, Immunofluorescence and ELISA research applications.
Applications	WB, IHC-P, IF-P, ELISA
Host/Source	Rabbit
Reactivity	Human, Mouse

PRODUCT PROPERTIES

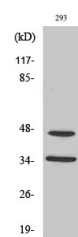
Clonality	Polyclonal
Clone ID	
Concentration	1 mg/mL
Conjugation	Unconjugated
Purification	The antibody was affinity-purified from rabbit anti-serum by affinity-chromatography.
Dilution Range	WB 1:500-1:2000 IHC 1:100-1:300 ELISA 1:20000
Formulation	PBS, 50% Glycerol, 0.5% BSA and 0.02% Sodium Azide.
Isotype	IgG
Storage Instruction	Store at -20°C for up to 1 year from the date of receipt, and avoid repeat freeze-thaw cycles.

TARGET INFORMATION

Gene ID	27023 442425
Gene Symbol	FOXB1 FOXB2
Uniprot ID	FOXB1_HUMAN FOXB2_HUMAN
Immunogen Region	The antiserum was produced against synthesized peptide derived from human FOXB1/2 at amino acid range 51-100 30-110 Internal
Specificity	FoxB1/2 polyclonal antibody (Forkhead box protein B1 and Forkhead box protein B2) binds to endogenous Forkhead box protein B1 and Forkhead box protein B2 at the amino acid region 30-110 Internal.
Immunogen Sequence	



Western blot analysis of lysates from 293 cells, using FOXB1/2 Antibody. The lane on the right is blocked with the synthesized peptide.



Western blot analysis of various cells using FoxB1/2 Polyclonal Antibody cells nucleus extracted by Minute TM Cytoplasmic and Nuclear Fractionation kit (SC-003, Inventibiotech, MN, USA).

This product is suitable for in-vitro studies under the RESEARCH USE ONLY [RUO] licence. This product must not be used as for diagnostic or other medical purposes.
St John's Laboratory Ltd, Knowledge Dock Business Centre, University Way, London, E16 2RD | Tel: 0208 223 3081