

Anti-FOSB antibody (10-90) (STJ93103)

STJ93103

GENERAL INFORMATION

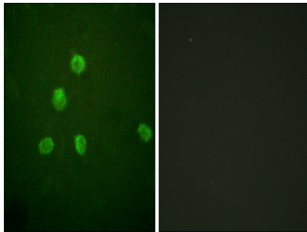
Product Type	Primary antibodies
Short Description	Rabbit polyclonal antibody anti-Protein Fosb (10-90) is suitable for use in Western Blot, Immunohistochemistry, Immunofluorescence, Immunocytochemistry and ELISA research applications.
Applications	WB, IHC-P, IF, ICC, ELISA
Host/Source	Rabbit
Reactivity	Human, Mouse, Simian

PRODUCT PROPERTIES

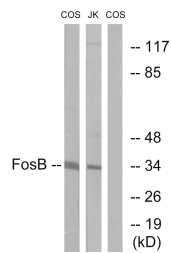
Clonality	Polyclonal
Clone ID	
Concentration	1 mg/mL
Conjugation	Unconjugated
Purification	The antibody was affinity-purified from rabbit anti-serum by affinity-chromatography.
Dilution Range	WB 1:500-1:2000 IHC 1:100-1:300 IF 1:200-1:1000 ELISA 1:20000
Formulation	PBS, 50% Glycerol, 0.5% BSA and 0.02% Sodium Azide.
Isotype	IgG
Storage Instruction	Store at -20°C for up to 1 year from the date of receipt, and avoid repeat freeze-thaw cycles.

TARGET INFORMATION

Gene ID	2354
Gene Symbol	FOSB
Uniprot ID	FOSB_HUMAN
Immunogen	The antiserum was produced against synthesized peptide derived from human FosB at amino acid range 12-61
Immunogen Region	10-90
Specificity	FOSB polyclonal antibody (Protein Fosb) binds to endogenous Protein Fosb at the amino acid region 10-90.
Immunogen Sequence	



Immunofluorescence analysis of HepG2 cells, using FosB Antibody. The picture on the right is blocked with the synthesized peptide.



Western blot analysis of lysates from COS7 and Jurkat cells, using FosB Antibody. The lane on the right is blocked with the synthesized peptide.



Western blot analysis of various cells using Fos B Polyclonal Antibody cells nucleus extracted by Minute™ Cytoplasmic and Nuclear Fractionation kit (SC-003, Inventiotech, MN, USA).