

## Anti-THOC5 antibody (530-610 C-Term) (STJ93097)

STJ93097

### GENERAL INFORMATION

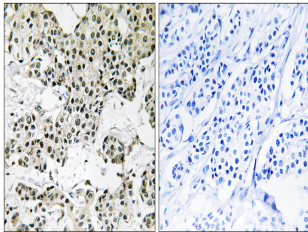
<b>Product Type</b>	Primary antibodies
<b>Short Description</b>	Rabbit polyclonal antibody anti-Tho Complex Subunit 5 Homolog (530-610 C-Term) is suitable for use in Western Blot, Immunohistochemistry, Immunofluorescence and ELISA research applications.
<b>Applications</b>	WB, IHC-P, IF-P, ELISA
<b>Host/Source</b>	Rabbit
<b>Reactivity</b>	Human, Mouse, Rat

### PRODUCT PROPERTIES

<b>Clonality</b>	Polyclonal
<b>Clone ID</b>	
<b>Concentration</b>	1 mg/mL
<b>Conjugation</b>	Unconjugated
<b>Purification</b>	The antibody was affinity-purified from rabbit anti-serum by affinity-chromatography.
<b>Dilution Range</b>	WB 1:500-1:2000 IHC 1:100-1:300 ELISA 1:20000
<b>Formulation</b>	PBS, 50% Glycerol, 0.5% BSA and 0.02% Sodium Azide.
<b>Isotype</b>	IgG
<b>Storage Instruction</b>	Store at -20°C for up to 1 year from the date of receipt, and avoid repeat freeze-thaw cycles.

### TARGET INFORMATION

<b>Gene ID</b>	8563
<b>Gene Symbol</b>	THOC5
<b>Uniprot ID</b>	THOC5_HUMAN
<b>Immunogen Region</b>	The antiserum was produced against synthesized peptide derived from human THOC5 at amino acid range 561-610
<b>Specificity</b>	530-610 C-Term
<b>Immunogen Sequence</b>	THOC5 polyclonal antibody (Tho Complex Subunit 5 Homolog) binds to endogenous Tho Complex Subunit 5 Homolog at the amino acid region 530-610 C-Term.



Immunohistochemistry analysis of paraffin-embedded human breast carcinoma tissue, using THOC5 Antibody. The picture on the right is blocked with the synthesized peptide.