

## Anti-FLT1 antibody (980-1060) (STJ93093)

STJ93093

### GENERAL INFORMATION

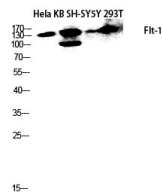
|                          |   |
|--------------------------|---|
| <b>Product Type</b>      | Primary antibodies  |
| <b>Short Description</b> | Rabbit polyclonal antibody anti-Vascular Endothelial Growth Factor Receptor 1 (980-1060) is suitable for use in Western Blot, Immunohistochemistry, Immunofluorescence and ELISA research applications. |
| <b>Applications</b>      | WB, IHC-P, IF-P, ELISA  |
| <b>Host/Source</b>       | Rabbit  |
| <b>Reactivity</b>        | Human, Mouse, Rat   |

### PRODUCT PROPERTIES

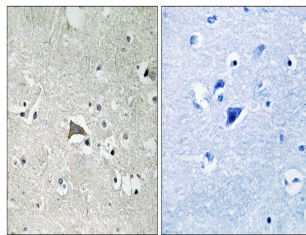
|                            |  |
|----------------------------|--|
| <b>Clonality</b>           | Polyclonal   |
| <b>Clone ID</b>            |  |
| <b>Concentration</b>       | 1 mg/mL  |
| <b>Conjugation</b>         | Unconjugated   |
| <b>Purification</b>        | The antibody was affinity-purified from rabbit anti-serum by affinity-chromatography.          |
| <b>Dilution Range</b>      | WB 1:500-1:2000<br>IHC 1:100-1:300<br>ELISA 1:5000   |
| <b>Formulation</b>         | PBS, 50% Glycerol, 0.5% BSA and 0.02% Sodium Azide.  |
| <b>Isotype</b>             | IgG  |
| <b>Storage Instruction</b> | Store at -20°C for up to 1 year from the date of receipt, and avoid repeat freeze-thaw cycles. |

### TARGET INFORMATION

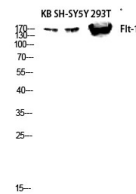
|                           |   |
|---------------------------|---|
| <b>Gene ID</b>            | 2321  |
| <b>Gene Symbol</b>        | FLT1  |
| <b>Uniprot ID</b>         | VGFR1_HUMAN   |
| <b>Immunogen</b>          | The antiserum was produced against synthesized peptide derived from human VEGFR1 at amino acid range 1016-1065  |
| <b>Immunogen Region</b>   | 980-1060  |
| <b>Specificity</b>        | FLT1 polyclonal antibody (Vascular Endothelial Growth Factor Receptor 1) binds to endogenous Vascular Endothelial Growth Factor Receptor 1 at the amino acid region 980-1060. |
| <b>Immunogen Sequence</b> |   |



Western blot analysis of HeLa KB SH-SY5Y 293T lysis using Fit-1 antibody. Antibody was diluted at 1:1000



Immunohistochemistry analysis of paraffin-embedded human brain tissue, using VEGFR1 Antibody. The picture on the right is blocked with the synthesized peptide.



Western blot analysis of KB SH-SY5Y 293T lysis using Fit-1 antibody. Antibody was diluted at 1:1000