

Anti-FLI1 antibody (260-340 Internal) (STJ93085)

STJ93085

GENERAL INFORMATION

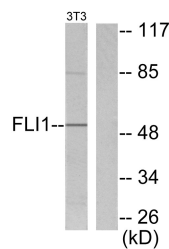
Product Type	Primary antibodies
Short Description	Rabbit polyclonal antibody anti-Friend Leukemia Integration 1 Transcription Factor (260-340 Internal) is suitable for use in Western Blot, Immunohistochemistry, Immunofluorescence and ELISA research applications.
Applications	WB, IHC-P, IF-P, ELISA
Host/Source	Rabbit
Reactivity	Human, Mouse

PRODUCT PROPERTIES

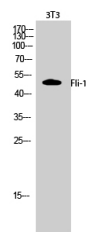
Clonality	Polyclonal
Clone ID	
Concentration	1 mg/mL
Conjugation	Unconjugated
Purification	The antibody was affinity-purified from rabbit anti-serum by affinity-chromatography.
Dilution Range	WB 1:500-1:2000 IHC 1:100-1:300 ELISA 1:10000
Formulation	PBS, 50% Glycerol, 0.5% BSA and 0.02% Sodium Azide.
Isotype	IgG
Storage Instruction	Store at -20°C for up to 1 year from the date of receipt, and avoid repeat freeze-thaw cycles.

TARGET INFORMATION

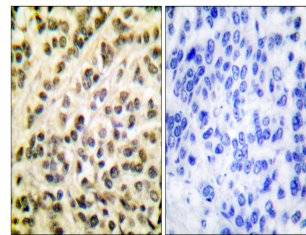
Gene ID	2313
Gene Symbol	FLI1
Uniprot ID	FLI1_HUMAN
Immunogen	The antiserum was produced against synthesized peptide derived from human FLI1 at amino acid range 291-340
Immunogen Region	260-340 Internal
Specificity	FLI1 polyclonal antibody (Friend Leukemia Integration 1 Transcription Factor) binds to endogenous Friend Leukemia Integration 1 Transcription Factor at the amino acid region 260-340 Internal.
Immunogen Sequence	



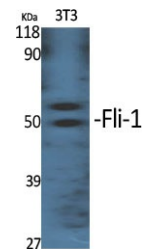
Western blot analysis of lysates from NIH/3T3 cells, using FLI1 Antibody. The lane on the right is blocked with the synthesized peptide.



Western blot analysis of 3T3 cells using FLI-1 Polyclonal Antibody cells nucleus extracted by Minute TM Cytoplasmic and Nuclear Fractionation kit (SC-003, Inventibiotech, MN, USA).



Immunohistochemistry analysis of paraffin-embedded human breast carcinoma tissue, using FLI1 Antibody. The picture on the right is blocked with the synthesized peptide.



Western blot analysis of various cells using FLI-1 Polyclonal Antibody cells nucleus extracted by Minute TM Cytoplasmic and Nuclear Fractionation kit (SC-003, Inventibiotech, MN, USA).

This product is suitable for in-vitro studies under the RESEARCH USE ONLY [RUO] licence. This product must not be used as for diagnostic or other medical purposes.
St John's Laboratory Ltd, Knowledge Dock Business Centre, University Way, London, E16 2RD | Tel: 0208 223 3081