

Anti-FKRP antibody (10-90 N-Term) (STJ93080)

STJ93080

GENERAL INFORMATION

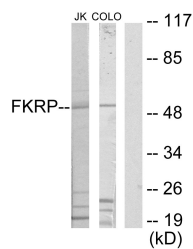
Product Type	Primary antibodies
Short Description	Rabbit polyclonal antibody anti-Fukutin-Related Protein (10-90 N-Term) is suitable for use in Western Blot, Immunofluorescence, Immunocytochemistry and ELISA research applications.
Applications	WB, IF, ICC, ELISA
Host/Source	Rabbit
Reactivity	Human, Mouse, Rat

PRODUCT PROPERTIES

Clonality	Polyclonal
Clone ID	
Concentration	1 mg/mL
Conjugation	Unconjugated
Purification	The antibody was affinity-purified from rabbit anti-serum by affinity-chromatography.
Dilution Range	WB 1:500-1:2000 IF 1:200-1:1000 ELISA 1:20000
Formulation	PBS, 50% Glycerol, 0.5% BSA and 0.02% Sodium Azide.
Isotype	IgG
Storage Instruction	Store at -20°C for up to 1 year from the date of receipt, and avoid repeat freeze-thaw cycles.

TARGET INFORMATION

Gene ID	79147
Gene Symbol	FKRP
Uniprot ID	FKRP_HUMAN
Immunogen	The antiserum was produced against synthesized peptide derived from human FKRP at amino acid range 1-50
Immunogen Region	10-90 N-Term
Specificity	FKRP polyclonal antibody (Fukutin-Related Protein) binds to endogenous Fukutin-Related Protein at the amino acid region 10-90 N-Term.
Immunogen Sequence	



Western blot analysis of lysates from Jurkat and COLO205 cells, using FKRP Antibody. The lane on the right is blocked with the synthesized peptide.