

Anti-FARP2 antibody (300-380 Internal) (STJ93077)

STJ93077

GENERAL INFORMATION

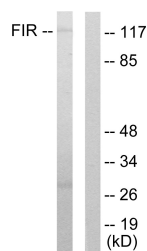
Product Type	Primary antibodies
Short Description	Rabbit polyclonal antibody anti-Ferm-Arhegef And Pleckstrin Domain-Containing Protein 2 (300-380 Internal) is suitable for use in Western Blot, Immunofluorescence, Immunocytochemistry and ELISA research applications.
Applications	WB, IF, ICC, ELISA
Host/Source	Rabbit
Reactivity	Human, Mouse

PRODUCT PROPERTIES

Clonality	Polyclonal
Clone ID	
Concentration	1 mg/mL
Conjugation	Unconjugated
Purification	The antibody was affinity-purified from rabbit anti-serum by affinity-chromatography.
Dilution Range	WB 1:500-1:2000 IF 1:200-1:1000 ELISA 1:20000
Formulation	PBS, 50% Glycerol, 0.5% BSA and 0.02% Sodium Azide.
Isotype	IgG
Storage Instruction	Store at 20°C for up to 1 year from the date of receipt, and avoid repeat freeze-thaw cycles.

TARGET INFORMATION

Gene ID	9855
Gene Symbol	FARP2
Uniprot ID	FARP2_HUMAN
Immunogen	The antiserum was produced against synthesized peptide derived from human FIR at amino acid range 331-380
Immunogen Region	300-380 Internal
Specificity	FARP2 polyclonal antibody (Ferm-Arhegef And Pleckstrin Domain-Containing Protein 2) binds to endogenous Ferm-Arhegef And Pleckstrin Domain-Containing Protein 2 at the amino acid region 300-380 Internal.
Immunogen Sequence	



Western blot analysis of lysates from HUVEC cells, using FIR Antibody. The lane on the right is blocked with the synthesized peptide.



Western blot analysis of various cells using FIR Polyclonal Antibody

This product is suitable for in-vitro studies under the RESEARCH USE ONLY [RUO] licence. This product must not be used as for diagnostic or other medical purposes.
St John's Laboratory Ltd, Knowledge Dock Business Centre, University Way, London, E16 2RD | Tel: 0208 223 3081