

Anti-EFEMP1 antibody (80-160 Internal) (STJ93073)

STJ93073

GENERAL INFORMATION

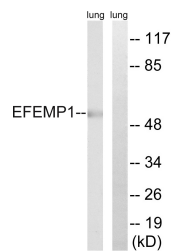
Product Type	Primary antibodies
Short Description	Rabbit polyclonal antibody anti-Egf-Containing Fibulin-Like Extracellular Matrix Protein 1 (80-160 Internal) is suitable for use in Western Blot, Immunohistochemistry, Immunofluorescence and ELISA research applications.
Applications	WB, IHC-P, IF-P, ELISA
Host/Source	Rabbit
Reactivity	Human, Mouse, Rat

PRODUCT PROPERTIES

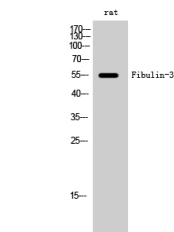
Clonality	Polyclonal
Clone ID	
Concentration	1 mg/mL
Conjugation	Unconjugated
Purification	The antibody was affinity-purified from rabbit anti-serum by affinity-chromatography.
Dilution Range	WB 1:500-1:2000 IHC 1:100-1:300 ELISA 1:10000
Formulation	PBS, 50% Glycerol, 0.5% BSA and 0.02% Sodium Azide.
Isotype	IgG
Storage Instruction	Store at 20°C for up to 1 year from the date of receipt, and avoid repeat freeze-thaw cycles.

TARGET INFORMATION

Gene ID	2202
Gene Symbol	EFEMP1
Uniprot ID	FBLN3_HUMAN
Immunogen	The antiserum was produced against synthesized peptide derived from human EFEMP1 at amino acid range 111-160
Immunogen Region	80-160 Internal
Specificity	EFEMP1 polyclonal antibody (Egf-Containing Fibulin-Like Extracellular Matrix Protein 1) binds to endogenous Egf-Containing Fibulin-Like Extracellular Matrix Protein 1 at the amino acid region 80-160 Internal.
Immunogen Sequence	



Western blot analysis of lysates from rat lung, using EFEMP1 Antibody. The lane on the right is blocked with the synthesized peptide.



Western blot analysis of rat cells using Fibulin-3 Polyclonal Antibody

This product is suitable for in-vitro studies under the RESEARCH USE ONLY [RUO] licence. This product must not be used as for diagnostic or other medical purposes.
St John's Laboratory Ltd, Knowledge Dock Business Centre, University Way, London, E16 2RD | Tel: 0208 223 3081