

Anti-FGL2 antibody (N-Term) (STJ93068)

STJ93068

GENERAL INFORMATION

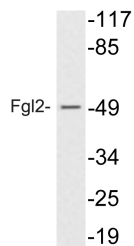
| | |
|--------------------------|---|
| Product Type | Primary antibodies |
| Short Description | Rabbit polyclonal antibody anti-Fibroleukin (N-Term) is suitable for use in Western Blot and ELISA research applications. |
| Applications | WB, ELISA |
| Host/Source | Rabbit |
| Reactivity | Human, Rat, Mouse |

PRODUCT PROPERTIES

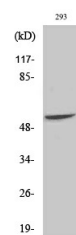
| | |
|----------------------------|--|
| Clonality | Polyclonal |
| Clone ID | |
| Concentration | 1 mg/mL |
| Conjugation | Unconjugated |
| Purification | The antibody was affinity-purified from rabbit anti-serum by affinity-chromatography. |
| Dilution Range | WB 1:500-1:2000 ELISA 1:10000 |
| Formulation | PBS, 50% Glycerol, 0.5% BSA and 0.02% Sodium Azide. |
| Isotype | IgG |
| Storage Instruction | Store at -20°C for up to 1 year from the date of receipt, and avoid repeat freeze-thaw cycles. |

TARGET INFORMATION

| | |
|---------------------------|--|
| Gene ID | 10875 |
| Gene Symbol | FGL2 |
| Uniprot ID | FGL2_HUMAN |
| Immunogen | The antiserum was produced against synthesized peptide derived from human Fgl2 at amino acid range 38-87 |
| Immunogen Region | N-Term |
| Specificity | FGL2 polyclonal antibody (Fibroleukin) binds to endogenous Fibroleukin at the amino acid region N-Term. |
| Immunogen Sequence | |



Western blot analysis of lysate from 293 cells treated with insulin, using Fgl2 antibody.



Western blot analysis of various cells using Fgl2 Polyclonal Antibody

This product is suitable for in-vitro studies under the RESEARCH USE ONLY [RUO] licence. This product must not be used as for diagnostic or other medical purposes.
St John's Laboratory Ltd, Knowledge Dock Business Centre, University Way, London, E16 2RD | Tel: 0208 223 3081