

Anti-FGFR1 antibody (130-210 Internal) (STJ93067)

STJ93067

GENERAL INFORMATION

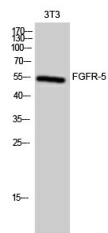
Product Type	Primary antibodies
Short Description	Rabbit polyclonal antibody anti-Fibroblast Growth Factor Receptor-Like 1 (130-210 Internal) is suitable for use in Western Blot and ELISA research applications.
Applications	WB, ELISA
Host/Source	Rabbit
Reactivity	Human, Mouse

PRODUCT PROPERTIES

Clonality	Polyclonal
Clone ID	
Concentration	1 mg/mL
Conjugation	Unconjugated
Purification	The antibody was affinity-purified from rabbit anti-serum by affinity-chromatography.
Dilution Range	WB 1:500-1:2000 ELISA 1:40000
Formulation	PBS, 50% Glycerol, 0.5% BSA and 0.02% Sodium Azide.
Isotype	IgG
Storage	Store at -20°C for up to 1 year from the date of receipt, and avoid repeat freeze-thaw cycles.
Instruction	

TARGET INFORMATION

Gene ID	53834
Gene Symbol	FGFR1
Uniprot ID	FGRL1_HUMAN
Immunogen	Synthesized peptide derived from FGFR-5. at amino acid range: 130-210
Immunogen Region	130-210 Internal
Specificity	FGFR1 polyclonal antibody (Fibroblast Growth Factor Receptor-Like 1) binds to endogenous Fibroblast Growth Factor Receptor-Like 1 at the amino acid region 130-210 Internal.
Immunogen Sequence	



Western blot analysis of 3T3 cells using FGFR-5 Polyclonal Antibody

This product is suitable for in-vitro studies under the RESEARCH USE ONLY [RUO] licence. This product must not be used as for diagnostic or other medical purposes.
 St John's Laboratory Ltd, Knowledge Dock Business Centre, University Way, London, E16 2RD | Tel: 0208 223 3081