

Anti-FGF13 antibody (130-210 Internal) (STJ93061)

STJ93061

GENERAL INFORMATION

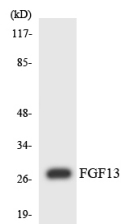
Product Type	Primary antibodies
Short Description	Rabbit polyclonal antibody anti-Fibroblast Growth Factor 13 (130-210 Internal) is suitable for use in Western Blot and ELISA research applications.
Applications	WB, ELISA
Host/Source	Rabbit
Reactivity	Human, Mouse, Rat

PRODUCT PROPERTIES

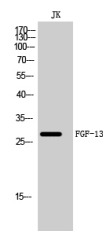
Clonality	Polyclonal
Clone ID	
Concentration	1 mg/mL
Conjugation	Unconjugated
Purification	The antibody was affinity-purified from rabbit anti-serum by affinity-chromatography.
Dilution Range	WB 1:500-1:2000 ELISA 1:5000
Formulation	PBS, 50% Glycerol, 0.5% BSA and 0.02% Sodium Azide.
Isotype	IgG
Storage	Store at -20°C for up to 1 year from the date of receipt, and avoid repeat freeze-thaw cycles.
Instruction	

TARGET INFORMATION

Gene ID	2258
Gene Symbol	FGF13
Uniprot ID	FGF13_HUMAN
Immunogen	The antiserum was produced against synthesized peptide derived from human FGF13 at amino acid range 154-203
Immunogen Region	130-210 Internal
Specificity	FGF13 polyclonal antibody (Fibroblast Growth Factor 13) binds to endogenous Fibroblast Growth Factor 13 at the amino acid region 130-210 Internal.
Immunogen Sequence	



Western blot analysis of the lysates from Jurkat cells using FGF13 antibody.



Western blot analysis of JK cells using FGF-13 Polyclonal Antibody diluted at 1: 500

This product is suitable for in-vitro studies under the RESEARCH USE ONLY [RUO] licence. This product must not be used as for diagnostic or other medical purposes.
St John's Laboratory Ltd, Knowledge Dock Business Centre, University Way, London, E16 2RD | Tel: 0208 223 3081