

Anti-FGF1 antibody (Internal) (STJ93060)

STJ93060

GENERAL INFORMATION

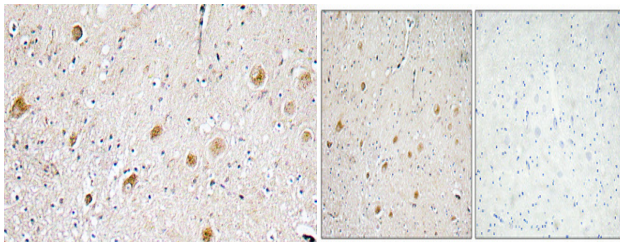
Product Type	Primary antibodies
Short Description	Rabbit polyclonal antibody anti-Fibroblast Growth Factor 1 (Internal) is suitable for use in Immunohistochemistry, Immunofluorescence and ELISA research applications.
Applications	IHC-P, IF-P, ELISA
Host/Source	Rabbit
Reactivity	Human, Mouse, Rat

PRODUCT PROPERTIES

Clonality	Polyclonal
Clone ID	
Concentration	1 mg/mL
Conjugation	Unconjugated
Purification	The antibody was affinity-purified from rabbit anti-serum by affinity-chromatography.
Dilution Range	IHC 1:100-1:300 ELISA 1:10000
Formulation	PBS, 50% Glycerol, 0.5% BSA and 0.02% Sodium Azide.
Isotype	IgG
Storage Instruction	Store at -20°C for up to 1 year from the date of receipt, and avoid repeat freeze-thaw cycles.

TARGET INFORMATION

Gene ID	2246
Gene Symbol	FGF1
Uniprot ID	FGF1_HUMAN
Immunogen	The antiserum was produced against synthesized peptide derived from human FGF-1 at amino acid range 7-56
Immunogen Region	Internal
Specificity	FGF1 polyclonal antibody (Fibroblast Growth Factor 1) binds to endogenous Fibroblast Growth Factor 1 at the amino acid region Internal.
Immunogen Sequence	



Immunohistochemistry analysis of FGF-1 antibody in paraffin-embedded human brain tissue.

Immunohistochemical analysis of paraffin-embedded Human brain. Antibody was diluted at 1:100 (4°C overnight). High-pressure and temperature Tris-EDTA, pH8.0 was used for antigen retrieval. Negative control (right) obtained from antibody was pre-absorbed by immunogen peptide.