

## Anti-FES antibody (100-180 Internal) (STJ93058)

STJ93058

### GENERAL INFORMATION

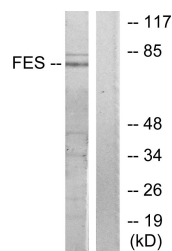
<b>Product Type</b>	Primary antibodies
<b>Short Description</b>	Rabbit polyclonal antibody anti-Tyrosine-Protein Kinase Fes/Fps (100-180 Internal) is suitable for use in Western Blot, Immunohistochemistry, Immunofluorescence and ELISA research applications.
<b>Applications</b>	WB, IHC-P, IF-P, ELISA
<b>Host/Source</b>	Rabbit
<b>Reactivity</b>	Human, Mouse

### PRODUCT PROPERTIES

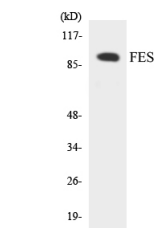
<b>Clonality</b>	Polyclonal
<b>Clone ID</b>	
<b>Concentration</b>	1 mg/mL
<b>Conjugation</b>	Unconjugated
<b>Purification</b>	The antibody was affinity-purified from rabbit anti-serum by affinity-chromatography.
<b>Dilution Range</b>	WB 1:500-1:2000 IHC 1:100-1:300 ELISA 1:20000
<b>Formulation</b>	PBS, 50% Glycerol, 0.5% BSA and 0.02% Sodium Azide.
<b>Isotype</b>	IgG
<b>Storage Instruction</b>	Store at -20°C for up to 1 year from the date of receipt, and avoid repeat freeze-thaw cycles.

### TARGET INFORMATION

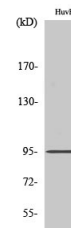
<b>Gene ID</b>	2242
<b>Gene Symbol</b>	FES
<b>Uniprot ID</b>	FES_HUMAN
<b>Immunogen</b>	The antiserum was produced against synthesized peptide derived from human FES at amino acid range 131-180
<b>Immunogen Region</b>	100-180 Internal
<b>Specificity</b>	FES polyclonal antibody (Tyrosine-Protein Kinase Fes/Fps) binds to endogenous Tyrosine-Protein Kinase Fes/Fps at the amino acid region 100-180 Internal.
<b>Immunogen Sequence</b>	



Western blot analysis of lysates from HUVEC cells, treated with serum 20% 30', using FES Antibody. The lane on the right is blocked with the synthesized peptide.



Western blot analysis of the lysates from HUVEC cells using FES antibody.



Western blot analysis of various cells using Fes Polyclonal Antibody.