

Anti-FER antibody (340-420) (STJ93056)

STJ93056

GENERAL INFORMATION

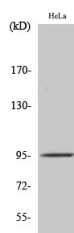
Product Type	Primary antibodies
Short Description	Rabbit polyclonal antibody anti-Tyrosine-Protein Kinase Fer (340-420) is suitable for use in Western Blot and ELISA research applications.
Applications	WB, ELISA
Host/Source	Rabbit
Reactivity	Human, Mouse

PRODUCT PROPERTIES

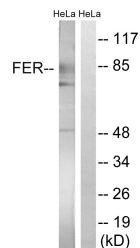
Clonality	Polyclonal
Clone ID	
Concentration	1 mg/mL
Conjugation	Unconjugated
Purification	The antibody was affinity-purified from rabbit anti-serum by affinity-chromatography.
Dilution Range	WB 1:500-1:2000 ELISA 1:40000
Formulation	PBS, 50% Glycerol, 0.5% BSA and 0.02% Sodium Azide.
Isotype	IgG
Storage Instruction	Store at -20°C for up to 1 year from the date of receipt, and avoid repeat freeze-thaw cycles.

TARGET INFORMATION

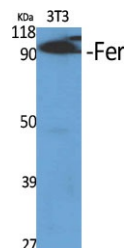
Gene ID	2241
Gene Symbol	FER
Uniprot ID	FER_HUMAN
Immunogen	The antiserum was produced against synthesized peptide derived from human FER at amino acid range 371-420
Immunogen Region	340-420
Specificity	FER polyclonal antibody (Tyrosine-Protein Kinase Fer) binds to endogenous Tyrosine-Protein Kinase Fer at the amino acid region 340-420.
Immunogen Sequence	



Western blot analysis of HeLa cells using Fer Polyclonal Antibody diluted at 1: 500



Western blot analysis of lysates from HeLa cells treated with paclitaxel 1uM 24h, using FER Antibody. The lane on the right is blocked with the synthesized peptide.



Western blot analysis of various cells using Fer Polyclonal Antibody diluted at 1: 500

This product is suitable for in-vitro studies under the RESEARCH USE ONLY [RUO] licence. This product must not be used as for diagnostic or other medical purposes.
St John's Laboratory Ltd, Knowledge Dock Business Centre, University Way, London, E16 2RD | Tel: 0208 223 3081