

Anti-FER antibody (740-820 C-Term) (STJ93055)

STJ93055

GENERAL INFORMATION

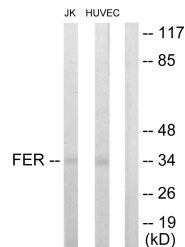
Product Type	Primary antibodies
Short Description	Rabbit polyclonal antibody anti-Tyrosine-Protein Kinase Fer (740-820 C-Term) is suitable for use in Western Blot, Immunohistochemistry, Immunofluorescence, Immunocytochemistry and ELISA research applications.
Applications	WB, IHC-P, IF, ICC, ELISA
Host/Source	Rabbit
Reactivity	Human, Mouse, Rat

PRODUCT PROPERTIES

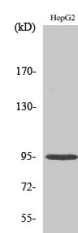
Clonality	Polyclonal
Clone ID	
Concentration	1 mg/mL
Conjugation	Unconjugated
Purification	The antibody was affinity-purified from rabbit anti-serum by affinity-chromatography.
Dilution Range	WB 1:500-1:2000 IHC 1:100-1:300 IF 1:200-1:1000 ELISA 1:5000
Formulation	PBS, 50% Glycerol, 0.5% BSA and 0.02% Sodium Azide.
Isotype	IgG
Storage Instruction	Store at -20°C for up to 1 year from the date of receipt, and avoid repeat freeze-thaw cycles.

TARGET INFORMATION

Gene ID	2241
Gene Symbol	FER
Uniprot ID	FER_HUMAN
Immunogen	The antiserum was produced against synthesized peptide derived from human FER at amino acid range 766-815
Immunogen Region	740-820 C-Term
Specificity	FER polyclonal antibody (Tyrosine-Protein Kinase Fer) binds to endogenous Tyrosine-Protein Kinase Fer at the amino acid region 740-820 C-Term.
Immunogen Sequence	



Western blot analysis of lysates from Jurkat and HUVEC cells, using FER Antibody. The lane on the right is blocked with the synthesized peptide.



Western blot analysis of various cells using Fer Polyclonal Antibody

This product is suitable for in-vitro studies under the RESEARCH USE ONLY [RUO] licence. This product must not be used as for diagnostic or other medical purposes.
St John's Laboratory Ltd, Knowledge Dock Business Centre, University Way, London, E16 2RD | Tel: 0208 223 3081