

Anti-APBB2 antibody (440-520 Internal) (STJ93053)

STJ93053

GENERAL INFORMATION

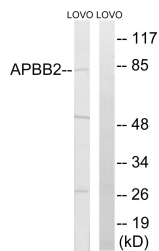
Product Type	Primary antibodies
Short Description	Rabbit polyclonal antibody anti-Amyloid Beta Precursor Protein Binding Family B Member 2 (440-520 Internal) is suitable for use in Western Blot, Immunohistochemistry, Immunofluorescence and ELISA research applications.
Applications	WB, IHC-P, IF-P, ELISA
Host/Source	Rabbit
Reactivity	Human, Mouse

PRODUCT PROPERTIES

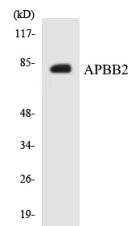
Clonality	Polyclonal
Clone ID	
Concentration	1 mg/mL
Conjugation	Unconjugated
Purification	The antibody was affinity-purified from rabbit anti-serum by affinity-chromatography.
Dilution Range	WB 1:500-1:2000 IHC 1:100-1:300 ELISA 1:40000
Formulation	PBS, 50% Glycerol, 0.5% BSA and 0.02% Sodium Azide.
Isotype	IgG
Storage Instruction	Store at 20°C for up to 1 year from the date of receipt, and avoid repeat freeze-thaw cycles.

TARGET INFORMATION

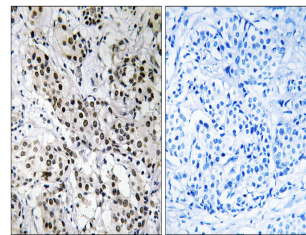
Gene ID	323
Gene Symbol	APBB2
Uniprot ID	APBB2_HUMAN
Immunogen	The antiserum was produced against synthesized peptide derived from human APBB2 at amino acid range 471-520
Immunogen Region	440-520 Internal
Specificity	APBB2 polyclonal antibody (Amyloid Beta Precursor Protein Binding Family B Member 2) binds to endogenous Amyloid Beta Precursor Protein Binding Family B Member 2 at the amino acid region 440-520 Internal.
Immunogen Sequence	



Western blot analysis of lysates from LOVO cells, using APBB2 Antibody. The lane on the right is blocked with the synthesized peptide.



Western blot analysis of the lysates from HepG2 cells using APBB2 antibody.



Immunohistochemistry analysis of paraffin-embedded human breast carcinoma tissue, using APBB2 Antibody. The picture on the right is blocked with the synthesized peptide.