

Anti-FBN1 antibody (2780-2860 C-Term) (STJ93049)

STJ93049

GENERAL INFORMATION

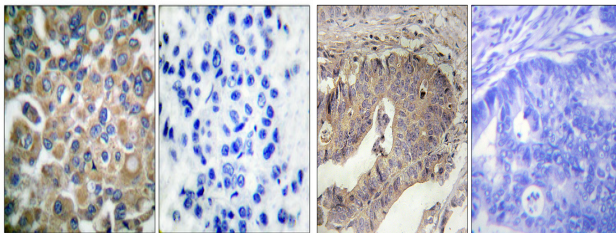
Product Type	Primary antibodies
Short Description	Rabbit polyclonal antibody anti-Fibrillin-1 Cleaved Into-Asprosin (2780-2860 C-Term) is suitable for use in Western Blot, Immunohistochemistry, Immunofluorescence and ELISA research applications.
Applications	WB, IHC-P, IF-P, ELISA
Host/Source	Rabbit
Reactivity	Human, Mouse, Rat

PRODUCT PROPERTIES

Clonality	Polyclonal
Clone ID	
Concentration	1 mg/mL
Conjugation	Unconjugated
Purification	The antibody was affinity-purified from rabbit anti-serum by affinity-chromatography.
Dilution	IHC 1:100-1:300
Range	ELISA 1:40000
Formulation	PBS, 50% Glycerol, 0.5% BSA and 0.02% Sodium Azide.
Isotype	IgG
Storage	Store at -20°C for up to 1 year from the date of receipt, and avoid repeat freeze-thaw cycles.
Instruction	

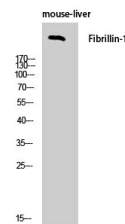
TARGET INFORMATION

Gene ID	2200
Gene Symbol	FBN1
Uniprot ID	FBN1_HUMAN
Immunogen	The antiserum was produced against synthesized peptide derived from human Fibrillin-1 at amino acid range 2811-2860
Immunogen Region	2780-2860 C-Term
Specificity	FBN1 polyclonal antibody (Fibrillin-1 Cleaved Into-Asprosin) binds to endogenous Fibrillin-1 Cleaved Into-Asprosin at the amino acid region 2780-2860 C-Term.
Immunogen Sequence	



Immunohistochemical analysis of paraffin-embedded Human breast cancer. Antibody was diluted at 1:100 (4°C overnight). High-pressure and temperature Tris-EDTA, pH8.0 was used for antigen retrieval. Negative control (right) obtained from antibody was pre-absorbed by immunogen peptide.

Immunohistochemistry analysis of paraffin-embedded human breast carcinoma tissue, using Fibrillin-1 Antibody. The picture on the right is blocked with the synthesized peptide.



Western blot analysis of mouse-liver cells using FBN1 Polyclonal Antibody