

## Anti-FASTKD2 antibody (140-220 Internal) (STJ93046)

STJ93046

### GENERAL INFORMATION

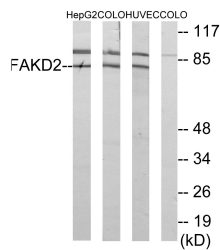
<b>Product Type</b>	Primary antibodies
<b>Short Description</b>	Rabbit polyclonal antibody anti-Fast Kinase Domain-Containing Protein 2-Mitochondrial (140-220 Internal) is suitable for use in Western Blot, Immunohistochemistry, Immunofluorescence and ELISA research applications.
<b>Applications</b>	WB, IHC-P, IF-P, ELISA
<b>Host/Source</b>	Rabbit
<b>Reactivity</b>	Human, Rat, Mouse

### PRODUCT PROPERTIES

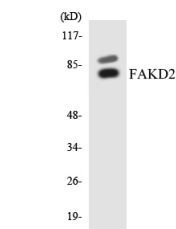
<b>Clonality</b>	Polyclonal
<b>Clone ID</b>	
<b>Concentration</b>	1 mg/mL
<b>Conjugation</b>	Unconjugated
<b>Purification</b>	The antibody was affinity-purified from rabbit anti-serum by affinity-chromatography.
<b>Dilution</b>	WB 1:500-1:2000
<b>Range</b>	ELISA 1:5000
<b>Formulation</b>	PBS, 50% Glycerol, 0.5% BSA and 0.02% Sodium Azide.
<b>Isotype</b>	IgG
<b>Storage</b>	Store at -20°C for up to 1 year from the date of receipt, and avoid repeat freeze-thaw cycles.
<b>Instruction</b>	

### TARGET INFORMATION

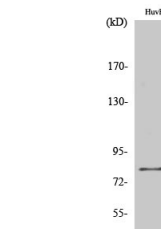
<b>Gene ID</b>	22868
<b>Gene Symbol</b>	FASTKD2
<b>Uniprot ID</b>	FAKD2_HUMAN
<b>Immunogen</b>	The antiserum was produced against synthesized peptide derived from human FAKD2 at amino acid range 171-220
<b>Immunogen Region</b>	140-220 Internal
<b>Specificity</b>	FASTKD2 polyclonal antibody (Fast Kinase Domain-Containing Protein 2-Mitochondrial) binds to endogenous Fast Kinase Domain-Containing Protein 2-Mitochondrial at the amino acid region 140-220 Internal.
<b>Immunogen Sequence</b>	



Western blot analysis of lysates from HepG2, COLO, HUVEC, and COLO cells, using FAKD2 Antibody. The lane on the right is blocked with the synthesized peptide.



Western blot analysis of the lysates from COLO205 cells using FAKD2 antibody.



Western blot analysis of various cells using FASTKD2 Polyclonal Antibody.