

Anti-FASTKD1 antibody (530-610 Internal) (STJ93045)

STJ93045

GENERAL INFORMATION

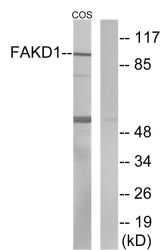
Product Type	Primary antibodies
Short Description	Rabbit polyclonal antibody anti-Fast Kinase Domain-Containing Protein 1-Mitochondrial (530-610 Internal) is suitable for use in Western Blot and ELISA research applications.
Applications	WB, ELISA
Host/Source	Rabbit
Reactivity	Human, Mouse, Simian

PRODUCT PROPERTIES

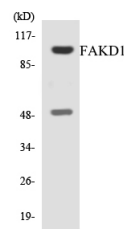
Clonality	Polyclonal
Clone ID	
Concentration	1 mg/mL
Conjugation	Unconjugated
Purification	The antibody was affinity-purified from rabbit anti-serum by affinity-chromatography.
Dilution	WB 1:500-1:2000
Range	ELISA 1:10000
Formulation	PBS, 50% Glycerol, 0.5% BSA and 0.02% Sodium Azide.
Isotype	IgG
Storage	Store at -20°C for up to 1 year from the date of receipt, and avoid repeat freeze-thaw cycles.
Instruction	

TARGET INFORMATION

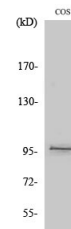
Gene ID	79675
Gene Symbol	FASTKD1
Uniprot ID	FAKD1_HUMAN
Immunogen	The antiserum was produced against synthesized peptide derived from human FAKD1 at amino acid range 561-610
Immunogen Region	530-610 Internal
Specificity	FASTKD1 polyclonal antibody (Fast Kinase Domain-Containing Protein 1-Mitochondrial) binds to endogenous Fast Kinase Domain-Containing Protein 1-Mitochondrial at the amino acid region 530-610 Internal.
Immunogen Sequence	



Western blot analysis of lysates from COS7 cells, using FAKD1 Antibody. The lane on the right is blocked with the synthesized peptide.



Western blot analysis of the lysates from HT-29 cells using FAKD1 antibody.



Western blot analysis of various cells using FASTKD1 Polyclonal Antibody