

## Anti-FAS antibody (230-310) (STJ93041)

STJ93041

### GENERAL INFORMATION

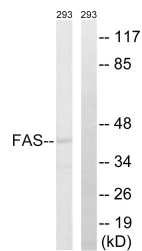
<b>Product Type</b>	Primary antibodies
<b>Short Description</b>	Rabbit polyclonal antibody anti-Tumor Necrosis Factor Receptor Superfamily Member 6 (230-310) is suitable for use in Western Blot, Immunohistochemistry, Immunofluorescence, Immunocytochemistry and ELISA research applications.
<b>Applications</b>	WB, IHC-P, IF, ICC, ELISA
<b>Host/Source</b>	Rabbit
<b>Reactivity</b>	Human, Rat, Mouse

### PRODUCT PROPERTIES

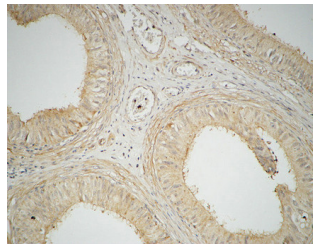
<b>Clonality</b>	Polyclonal
<b>Clone ID</b>	
<b>Concentration</b>	1 mg/mL
<b>Conjugation</b>	Unconjugated
<b>Purification</b>	The antibody was affinity-purified from rabbit anti-serum by affinity-chromatography.
<b>Dilution Range</b>	WB 1:500-2000 IF 1:50-300 IHC 1:50-300
<b>Formulation</b>	PBS, 50% Glycerol, 0.5% BSA and 0.02% Sodium Azide.
<b>Isotype</b>	IgG
<b>Storage Instruction</b>	Store at -20°C for up to 1 year from the date of receipt, and avoid repeat freeze-thaw cycles.

### TARGET INFORMATION

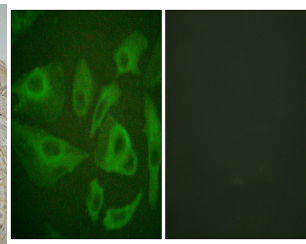
<b>Gene ID</b>	355
<b>Gene Symbol</b>	FAS
<b>Uniprot ID</b>	TNR6_HUMAN
<b>Immunogen</b>	The antiserum was produced against synthesized peptide derived from human FAS at amino acid range 257-306
<b>Immunogen Region</b>	230-310
<b>Specificity</b>	FAS polyclonal antibody (Tumor Necrosis Factor Receptor Superfamily Member 6) binds to endogenous Tumor Necrosis Factor Receptor Superfamily Member 6 at the amino acid region 230-310.
<b>Immunogen Sequence</b>	



Western blot analysis of lysates from 293 cells, using FAS Antibody. The lane on the right is blocked with the synthesized peptide.



Immunohistochemical analysis of paraffin-embedded Human testis. 1. Antibody was diluted at 1:100 (4°C overnight). 2. High-pressure and temperature EDTA, pH8.0 was used for antigen retrieval. 3. Secondary antibody was diluted at 1:200 (room temperature, 30min).



Immunofluorescence analysis of HeLa cells, using FAS Antibody. The picture on the right is blocked with the synthesized peptide.



Western blot analysis of various cells using FAS Polyclonal Antibody

This product is suitable for in-vitro studies under the RESEARCH USE ONLY [RUO] licence. This product must not be used as for diagnostic or other medical purposes.  
St John's Laboratory Ltd, Knowledge Dock Business Centre, University Way, London, E16 2RD | Tel: 0208 223 3081