

Anti-RIMKLB antibody (150-230 Internal) (STJ93038)

STJ93038

GENERAL INFORMATION

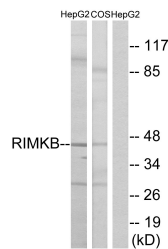
Product Type	Primary antibodies
Short Description	Rabbit polyclonal antibody anti-Beta-Citrylglutamate Synthase B (150-230 Internal) is suitable for use in Western Blot and ELISA research applications.
Applications	WB, ELISA
Host/Source	Rabbit
Reactivity	Human, Mouse, Rat, Simian

PRODUCT PROPERTIES

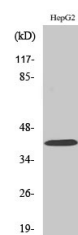
Clonality	Polyclonal
Clone ID	
Concentration	1 mg/mL
Conjugation	Unconjugated
Purification	The antibody was affinity-purified from rabbit anti-serum by affinity-chromatography.
Dilution Range	WB 1:500-1:2000 ELISA 1:5000
Formulation	PBS, 50% Glycerol, 0.5% BSA and 0.02% Sodium Azide.
Isotype	IgG
Storage	Store at -20°C for up to 1 year from the date of receipt, and avoid repeat freeze-thaw cycles.
Instruction	

TARGET INFORMATION

Gene ID	57494
Gene Symbol	RIMKLB
Uniprot ID	RIMKB_HUMAN
Immunogen	The antiserum was produced against synthesized peptide derived from human RIMKB at amino acid range 177-226
Immunogen Region	150-230 Internal
Specificity	RIMKLB polyclonal antibody (Beta-Citrylglutamate Synthase B) binds to endogenous Beta-Citrylglutamate Synthase B at the amino acid region 150-230 Internal.
Immunogen Sequence	



Western blot analysis of lysates from HepG2 and COS cells, using RIMKB Antibody. The lane on the right is blocked with the synthesized peptide.



Western blot analysis of various cells using FAM80B Polyclonal Antibody diluted at 1: 500

This product is suitable for in-vitro studies under the RESEARCH USE ONLY [RUO] licence. This product must not be used as for diagnostic or other medical purposes.
St John's Laboratory Ltd, Knowledge Dock Business Centre, University Way, London, E16 2RD | Tel: 0208 223 3081