

Anti-RIMKLA antibody (90-170 Internal) (STJ93037)

STJ93037

GENERAL INFORMATION

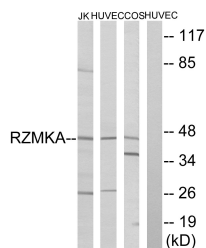
Product Type	Primary antibodies
Short Description	Rabbit polyclonal antibody anti-N-Acetylaspartylglutamate Synthase A (90-170 Internal) is suitable for use in Western Blot and ELISA research applications.
Applications	WB, ELISA
Host/Source	Rabbit
Reactivity	Human, Mouse, Simian

PRODUCT PROPERTIES

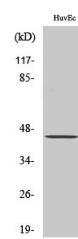
Clonality	Polyclonal
Clone ID	
Concentration	1 mg/mL
Conjugation	Unconjugated
Purification	The antibody was affinity-purified from rabbit anti-serum by affinity-chromatography.
Dilution Range	WB 1:500-1:2000 ELISA 1:20000
Formulation	PBS, 50% Glycerol, 0.5% BSA and 0.02% Sodium Azide.
Isotype	IgG
Storage Instruction	Store at -20°C for up to 1 year from the date of receipt, and avoid repeat freeze-thaw cycles.

TARGET INFORMATION

Gene ID	284716
Gene Symbol	RIMKLA
Uniprot ID	RIMKA_HUMAN
Immunogen	The antiserum was produced against synthesized peptide derived from human RIMKA at amino acid range 112-161
Immunogen Region	90-170 Internal
Specificity	RIMKLA polyclonal antibody (N-Acetylaspartylglutamate Synthase A) binds to endogenous N-Acetylaspartylglutamate Synthase A at the amino acid region 90-170 Internal.
Immunogen Sequence	



Western blot analysis of lysates from HUVEC, COS, and Jurkat cells, using RIMKA Antibody. The lane on the right is blocked with the synthesized peptide.



Western blot analysis of various cells using FAM80A Polyclonal Antibody

This product is suitable for in-vitro studies under the RESEARCH USE ONLY [RUO] licence. This product must not be used as for diagnostic or other medical purposes.
St John's Laboratory Ltd, Knowledge Dock Business Centre, University Way, London, E16 2RD | Tel: 0208 223 3081