

Anti-FAF1 antibody (500-580 C-Term) (STJ93023)

STJ93023

GENERAL INFORMATION

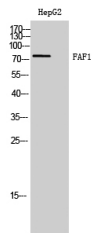
Product Type	Primary antibodies
Short Description	Rabbit polyclonal antibody anti-Fas-Associated Factor 1 (500-580 C-Term) is suitable for use in Western Blot and ELISA research applications.
Applications	WB, ELISA
Host/Source	Rabbit
Reactivity	Human, Mouse, Rat

PRODUCT PROPERTIES

Clonality	Polyclonal
Clone ID	
Concentration	1 mg/mL
Conjugation	Unconjugated
Purification	The antibody was affinity-purified from rabbit anti-serum by affinity-chromatography.
Dilution Range	WB 1:500-1:2000 ELISA 1:5000
Formulation	PBS, 50% Glycerol, 0.5% BSA and 0.02% Sodium Azide.
Isotype	IgG
Storage Instruction	Store at -20°C for up to 1 year from the date of receipt, and avoid repeat freeze-thaw cycles.

TARGET INFORMATION

Gene ID	11124
Gene Symbol	FAF1
Uniprot ID	FAF1_HUMAN
Immunogen	The antiserum was produced against synthesized peptide derived from human FAF1 at amino acid range 531-580
Immunogen Region	500-580 C-Term
Specificity	FAF1 polyclonal antibody (Fas-Associated Factor 1) binds to endogenous Fas-Associated Factor 1 at the amino acid region 500-580 C-Term.
Immunogen Sequence	



Western blot analysis of HepG2 cells using FAF1 Polyclonal Antibody

This product is suitable for in-vitro studies under the RESEARCH USE ONLY [RUO] licence. This product must not be used as for diagnostic or other medical purposes.
St John's Laboratory Ltd, Knowledge Dock Business Centre, University Way, London, E16 2RD | Tel: 0208 223 3081