

Anti-ADGRL4 antibody (230-310 Internal) (STJ93007)

STJ93007

GENERAL INFORMATION

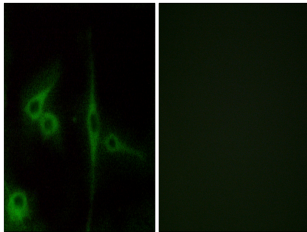
Product Type	Primary antibodies
Short Description	Rabbit polyclonal antibody anti-Adhesion G Protein-Coupled Receptor L4 (230-310 Internal) is suitable for use in Western Blot, Immunofluorescence, Immunocytochemistry and ELISA research applications.
Applications	WB, IF, ICC, ELISA
Host/Source	Rabbit
Reactivity	Human, Rat, Mouse

PRODUCT PROPERTIES

Clonality	Polyclonal
Clone ID	
Concentration	1 mg/mL
Conjugation	Unconjugated
Purification	The antibody was affinity-purified from rabbit anti-serum by affinity-chromatography.
Dilution Range	WB 1:500-1:2000 IF 1:200-1:1000 ELISA 1:20000
Formulation	PBS, 50% Glycerol, 0.5% BSA and 0.02% Sodium Azide.
Isotype	IgG
Storage Instruction	Store at -20°C for up to 1 year from the date of receipt, and avoid repeat freeze-thaw cycles.

TARGET INFORMATION

Gene ID	64123
Gene Symbol	ADGRL4
Uniprot ID	AGRL4_HUMAN
Immunogen	The antiserum was produced against synthesized peptide derived from human ELTD1 at amino acid range 251-300
Immunogen Region	230-310 Internal
Specificity	ADGRL4 polyclonal antibody (Adhesion G Protein-Coupled Receptor L4) binds to endogenous Adhesion G Protein-Coupled Receptor L4 at the amino acid region 230-310 Internal.
Immunogen Sequence	



Immunofluorescence analysis of LOVO cells, using ELTD1 Antibody. The picture on the right is blocked with the synthesized peptide.