

## Anti-ETNK2 antibody (30-110 Internal) (STJ93006)

STJ93006

### GENERAL INFORMATION

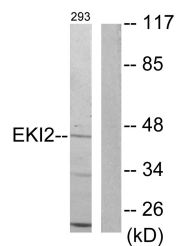
<b>Product Type</b>	Primary antibodies
<b>Short Description</b>	Rabbit polyclonal antibody anti-Ethanolamine Kinase 2 (30-110 Internal) is suitable for use in Western Blot, Immunohistochemistry, Immunofluorescence and ELISA research applications.
<b>Applications</b>	WB, IHC-P, IF-P, ELISA
<b>Host/Source</b>	Rabbit
<b>Reactivity</b>	Human, Mouse

### PRODUCT PROPERTIES

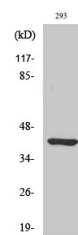
<b>Clonality</b>	Polyclonal
<b>Clone ID</b>	
<b>Concentration</b>	1 mg/mL
<b>Conjugation</b>	Unconjugated
<b>Purification</b>	The antibody was affinity-purified from rabbit anti-serum by affinity-chromatography.
<b>Dilution Range</b>	WB 1:500-1:2000 ELISA 1:5000
<b>Formulation</b>	PBS, 50% Glycerol, 0.5% BSA and 0.02% Sodium Azide.
<b>Isotype</b>	IgG
<b>Storage</b>	Store at -20°C for up to 1 year from the date of receipt, and avoid repeat freeze-thaw cycles.
<b>Instruction</b>	

### TARGET INFORMATION

<b>Gene ID</b>	55224
<b>Gene Symbol</b>	ETNK2
<b>Uniprot ID</b>	EKI2_HUMAN
<b>Immunogen</b>	The antiserum was produced against synthesized peptide derived from human EK12 at amino acid range 51-100
<b>Immunogen Region</b>	30-110 Internal
<b>Specificity</b>	ETNK2 polyclonal antibody (Ethanolamine Kinase 2) binds to endogenous Ethanolamine Kinase 2 at the amino acid region 30-110 Internal.
<b>Immunogen Sequence</b>	



Western blot analysis of lysates from 293 cells, using EK12 Antibody. The lane on the right is blocked with the synthesized peptide.



Western blot analysis of various cells using Ethanolamine kinase 2 Polyclonal Antibody