

Anti-MAPK15 antibody (330-410 Internal) (STJ92996)

STJ92996

GENERAL INFORMATION

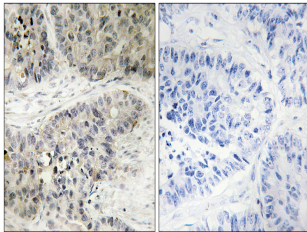
Product Type	Primary antibodies
Short Description	Rabbit polyclonal antibody anti-Mitogen-Activated Protein Kinase 15 (330-410 Internal) is suitable for use in Immunohistochemistry, Immunofluorescence, Immunocytochemistry and ELISA research applications.
Applications	IHC-P, IF, ICC, ELISA
Host/Source	Rabbit
Reactivity	Human, Rat, Mouse

PRODUCT PROPERTIES

Clonality	Polyclonal
Clone ID	
Concentration	1 mg/mL
Conjugation	Unconjugated
Purification	The antibody was affinity-purified from rabbit anti-serum by affinity-chromatography.
Dilution Range	IHC 1:100-1:300 IF 1:200-1:1000 ELISA 1:5000
Formulation	PBS, 50% Glycerol, 0.5% BSA and 0.02% Sodium Azide.
Isotype	IgG
Storage Instruction	Store at -20°C for up to 1 year from the date of receipt, and avoid repeat freeze-thaw cycles.

TARGET INFORMATION

Gene ID	225689
Gene Symbol	MAPK15
Uniprot ID	MK15_HUMAN
Immunogen Region	The antiserum was produced against synthesized peptide derived from human MAPK15 at amino acid range 361-410
Immunogen Region	330-410 Internal
Specificity	MAPK15 polyclonal antibody (Mitogen-Activated Protein Kinase 15) binds to endogenous Mitogen-Activated Protein Kinase 15 at the amino acid region 330-410 Internal.
Immunogen Sequence	



Immunohistochemistry analysis of paraffin-embedded human lung carcinoma, using MAPK15 Antibody. The picture on the right is blocked with the synthesized peptide.