

Anti-MAPK15 antibody (110-190) (STJ92995)

STJ92995

GENERAL INFORMATION

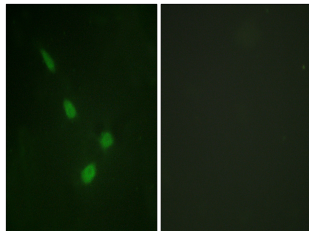
Product Type	Primary antibodies
Short Description	Rabbit polyclonal antibody anti-Mitogen-Activated Protein Kinase 15 (110-190) is suitable for use in Western Blot, Immunohistochemistry, Immunofluorescence, Immunocytochemistry and ELISA research applications.
Applications	WB, IHC-P, IF, ICC, ELISA
Host/Source	Rabbit
Reactivity	Human, Mouse

PRODUCT PROPERTIES

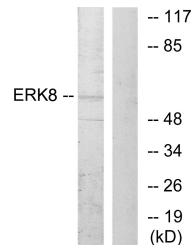
Clonality	Polyclonal
Clone ID	
Concentration	1 mg/mL
Conjugation	Unconjugated
Purification	The antibody was affinity-purified from rabbit anti-serum by affinity-chromatography.
Dilution Range	WB 1:500-1:2000 IHC 1:100-1:300 IF 1:200-1:1000 ELISA 1:10000
Formulation	PBS, 50% Glycerol, 0.5% BSA and 0.02% Sodium Azide.
Isotype	IgG
Storage Instruction	Store at -20°C for up to 1 year from the date of receipt, and avoid repeat freeze-thaw cycles.

TARGET INFORMATION

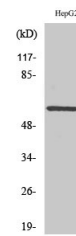
Gene ID	225689
Gene Symbol	MAPK15
Uniprot ID	MK15_HUMAN
Immunogen	The antiserum was produced against synthesized peptide derived from human MAPK15 at amino acid range 141-190
Immunogen Region	110-190
Specificity	MAPK15 polyclonal antibody (Mitogen-Activated Protein Kinase 15) binds to endogenous Mitogen-Activated Protein Kinase 15 at the amino acid region 110-190.
Immunogen Sequence	



Immunofluorescence analysis of NIH/3T3 cells, using ERK8 Antibody. The picture on the right is blocked with the synthesized peptide.



Western blot analysis of lysates from HepG2 cells, using ERK8 Antibody. The lane on the right is blocked with the synthesized peptide.



Western blot analysis of various cells using ERK 8 Polyclonal Antibody cells nucleus extracted by Minute TM Cytoplasmic and Nuclear Fractionation kit (SC-003, Inventibiotec, MN, USA).

This product is suitable for in-vitro studies under the RESEARCH USE ONLY [RUO] licence. This product must not be used as for diagnostic or other medical purposes.
St John's Laboratory Ltd, Knowledge Dock Business Centre, University Way, London, E16 2RD | Tel: 0208 223 3081