

Anti-MAPK3 antibody (130-210 Internal) (STJ92987)

STJ92987

GENERAL INFORMATION

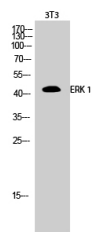
Product Type	Primary antibodies
Short Description	Rabbit polyclonal antibody anti-Mitogen-Activated Protein Kinase 3 (130-210 Internal) is suitable for use in Western Blot, Immunofluorescence, Immunocytochemistry and ELISA research applications.
Applications	WB, IF, ICC, ELISA
Host/Source	Rabbit
Reactivity	Human, Mouse, Rat

PRODUCT PROPERTIES

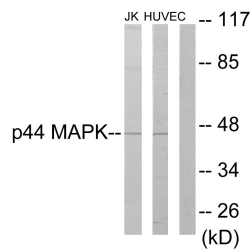
Clonality	Polyclonal
Clone ID	
Concentration	1 mg/mL
Conjugation	Unconjugated
Purification	The antibody was affinity-purified from rabbit anti-serum by affinity-chromatography.
Dilution Range	WB 1:500-1:2000 IF 1:200-1:1000 ELISA 1:40000
Formulation	PBS, 50% Glycerol, 0.5% BSA and 0.02% Sodium Azide.
Isotype	IgG
Storage Instruction	Store at 20°C for up to 1 year from the date of receipt, and avoid repeat freeze-thaw cycles.

TARGET INFORMATION

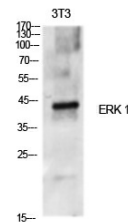
Gene ID	5595
Gene Symbol	MAPK3
Uniprot ID	MK03_HUMAN
Immunogen	The antiserum was produced against synthesized peptide derived from human p44 MAPK at amino acid range 161-210
Immunogen Region	130-210 Internal
Specificity	MAPK3 polyclonal antibody (Mitogen-Activated Protein Kinase 3) binds to endogenous Mitogen-Activated Protein Kinase 3 at the amino acid region 130-210 Internal.
Immunogen Sequence	



Western blot analysis of 3T3 cells using ERK 1 Polyclonal Antibody diluted at 1: 500



Western blot analysis of lysates from Jurkat and HUVEC cells, using p44 MAPK Antibody. The lane on the right is blocked with the synthesized peptide.



Western blot analysis of various cells using ERK 1 Polyclonal Antibody diluted at 1: 500

This product is suitable for in-vitro studies under the RESEARCH USE ONLY [RUO] licence. This product must not be used as for diagnostic or other medical purposes.
St John's Laboratory Ltd, Knowledge Dock Business Centre, University Way, London, E16 2RD | Tel: 0208 223 3081