

Anti-ERI1 antibody (230-310 Internal) (STJ92986)

STJ92986

GENERAL INFORMATION

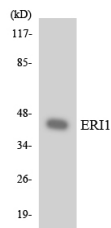
Product Type	Primary antibodies
Short Description	Rabbit polyclonal antibody anti-3 5 Exoribonuclease 1 (230-310 Internal) is suitable for use in Western Blot and ELISA research applications.
Applications	WB, ELISA
Host/Source	Rabbit
Reactivity	Human, Mouse, Rat

PRODUCT PROPERTIES

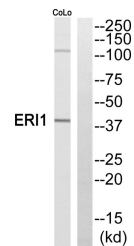
Clonality	Polyclonal
Clone ID	
Concentration	1 mg/mL
Conjugation	Unconjugated
Purification	The antibody was affinity-purified from rabbit anti-serum by affinity-chromatography.
Dilution Range	WB 1:500-1:2000 ELISA 1:5000
Formulation	PBS, 50% Glycerol, 0.5% BSA and 0.02% Sodium Azide.
Isotype	IgG
Storage Instruction	Store at -20°C for up to 1 year from the date of receipt, and avoid repeat freeze-thaw cycles.

TARGET INFORMATION

Gene ID	90459
Gene Symbol	ERI1
Uniprot ID	ERI1_HUMAN
Immunogen	The antiserum was produced against synthesized peptide derived from human ERI1 at amino acid range 261-310
Immunogen Region	230-310 Internal
Specificity	ERI1 polyclonal antibody (3 NA-5 Exoribonuclease 1) binds to endogenous 3 NA-5 Exoribonuclease 1 at the amino acid region 230-310 Internal.
Immunogen Sequence	



Western blot analysis of the lysates from HUVEC cells using ERI1 antibody.



Western blot analysis of ERI1 Antibody. The lane on the right is blocked with the ERI1 peptide.

This product is suitable for in-vitro studies under the RESEARCH USE ONLY [RUO] licence. This product must not be used as for diagnostic or other medical purposes.
 St John's Laboratory Ltd, Knowledge Dock Business Centre, University Way, London, E16 2RD | Tel: 0208 223 3081