

Anti-ERGIC3 antibody (280-360 C-Term) (STJ92985)

STJ92985

GENERAL INFORMATION

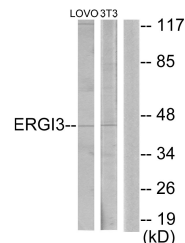
Product Type	Primary antibodies
Short Description	Rabbit polyclonal antibody anti-Endoplasmic Reticulum-Golgi Intermediate Compartment Protein 3 (280-360 C-Term) is suitable for use in Western Blot, Immunohistochemistry, Immunofluorescence, Immunocytochemistry and ELISA research applications.
Applications	WB, IHC-P, IF, ICC, ELISA
Host/Source	Rabbit
Reactivity	Human, Mouse

PRODUCT PROPERTIES

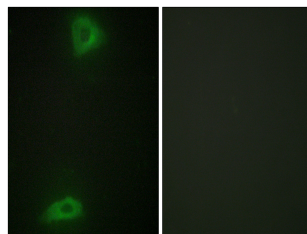
Clonality	Polyclonal
Clone ID	
Concentration	1 mg/mL
Conjugation	Unconjugated
Purification	The antibody was affinity-purified from rabbit anti-serum by affinity-chromatography.
Dilution Range	WB 1:500-1:2000 IHC 1:100-1:300 IF 1:200-1:1000 ELISA 1:20000
Formulation	PBS, 50% Glycerol, 0.5% BSA and 0.02% Sodium Azide.
Isotype	IgG
Storage Instruction	Store at -20°C for up to 1 year from the date of receipt, and avoid repeat freeze-thaw cycles.

TARGET INFORMATION

Gene ID	51614
Gene Symbol	ERGIC3
Uniprot ID	ERGIC3_HUMAN
Immunogen	The antiserum was produced against synthesized peptide derived from human ERGIC3 at amino acid range 321-370
Immunogen Region	280-360 C-Term
Specificity	ERGIC3 polyclonal antibody (Endoplasmic Reticulum-Golgi Intermediate Compartment Protein 3) binds to endogenous Endoplasmic Reticulum-Golgi Intermediate Compartment Protein 3 at the amino acid region 280-360 C-Term.
Immunogen Sequence	



Western blot analysis of lysates from LOVO and NIH/3T3 cells, using ERGIC3 Antibody. The lane on the right is blocked with the synthesized peptide.



Immunofluorescence analysis of HepG2 cells, using ERGIC3 Antibody. The picture on the right is blocked with the synthesized peptide.

This product is suitable for in-vitro studies under the RESEARCH USE ONLY [RUO] licence. This product must not be used as for diagnostic or other medical purposes.
St John's Laboratory Ltd, Knowledge Dock Business Centre, University Way, London, E16 2RD | Tel: 0208 223 3081