

Anti-GSPT1 antibody (70-150 Internal) (STJ92984)

STJ92984

GENERAL INFORMATION

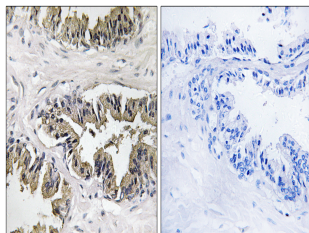
Product Type	Primary antibodies
Short Description	Rabbit polyclonal antibody anti-Eukaryotic Peptide Chain Release Factor Gtp-Binding Subunit Erf3a (70-150 Internal) is suitable for use in Western Blot, Immunohistochemistry, Immunofluorescence and ELISA research applications.
Applications	WB, IHC-P, IF-P, ELISA
Host/Source	Rabbit
Reactivity	Human, Mouse, Rat

PRODUCT PROPERTIES

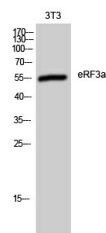
Clonality	Polyclonal
Clone ID	
Concentration	1 mg/mL
Conjugation	Unconjugated
Purification	The antibody was affinity-purified from rabbit anti-serum by affinity-chromatography.
Dilution Range	WB 1:500-1:2000 IHC 1:100-1:300 ELISA 1:40000
Formulation	PBS, 50% Glycerol, 0.5% BSA and 0.02% Sodium Azide.
Isotype	IgG
Storage Instruction	Store at -20°C for up to 1 year from the date of receipt, and avoid repeat freeze-thaw cycles.

TARGET INFORMATION

Gene ID	2935
Gene Symbol	GSPT1
Uniprot ID	ERF3A_HUMAN
Immunogen Region	The antiserum was produced against synthesized peptide derived from human GSPT1 at amino acid range 101-150 70-150 Internal
Specificity	GSPT1 polyclonal antibody (Eukaryotic Peptide Chain Release Factor Gtp-Binding Subunit Erf3a) binds to endogenous Eukaryotic Peptide Chain Release Factor Gtp-Binding Subunit Erf3a at the amino acid region 70-150 Internal.
Immunogen Sequence	



Immunohistochemistry analysis of paraffin-embedded human prostate carcinoma tissue, using GSPT1 Antibody. The picture on the right is blocked with the synthesized peptide.



Western blot analysis of 3T3 cells using eRF3a Polyclonal Antibody

This product is suitable for in-vitro studies under the RESEARCH USE ONLY [RUO] licence. This product must not be used as for diagnostic or other medical purposes.
St John's Laboratory Ltd, Knowledge Dock Business Centre, University Way, London, E16 2RD | Tel: 0208 223 3081