

Anti-ERCC4 antibody (770-850 C-Term) (STJ92980)

STJ92980

GENERAL INFORMATION

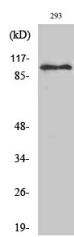
Product Type	Primary antibodies
Short Description	Rabbit polyclonal antibody anti-Dna Repair Endonuclease Xpf (770-850 C-Term) is suitable for use in Western Blot and ELISA research applications.
Applications	WB, ELISA
Host/Source	Rabbit
Reactivity	Human, Mouse

PRODUCT PROPERTIES

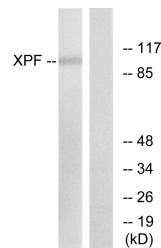
Clonality	Polyclonal
Clone ID	
Concentration	1 mg/mL
Conjugation	Unconjugated
Purification	The antibody was affinity-purified from rabbit anti-serum by affinity-chromatography.
Dilution Range	WB 1:500-1:2000 ELISA 1:10000
Formulation	PBS, 50% Glycerol, 0.5% BSA and 0.02% Sodium Azide.
Isotype	IgG
Storage	Store at -20°C for up to 1 year from the date of receipt, and avoid repeat freeze-thaw cycles.
Instruction	

TARGET INFORMATION

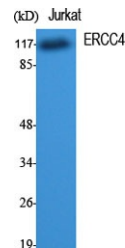
Gene ID	2072
Gene Symbol	ERCC4
Uniprot ID	XPF_HUMAN
Immunogen	The antiserum was produced against synthesized peptide derived from human XPF at amino acid range 801-850
Immunogen Region	770-850 C-Term
Specificity	ERCC4 polyclonal antibody (Dna Repair Endonuclease Xpf) binds to endogenous Dna Repair Endonuclease Xpf at the amino acid region 770-850 C-Term.
Immunogen Sequence	



Western blot analysis of 293 cells using ERCC4 Polyclonal Antibody cells nucleus extracted by Minute TM Cytoplasmic and Nuclear Fractionation kit (SC-003, Inventibiotech, MN, USA).



Western blot analysis of lysates from 293 cells, using XPF Antibody. The lane on the right is blocked with the synthesized peptide.



Western blot analysis of various cells using ERCC4 Polyclonal Antibody cells nucleus extracted by Minute TM Cytoplasmic and Nuclear Fractionation kit (SC-003, Inventibiotech, MN, USA).