

## Anti-EPN2 antibody (240-320 Internal) (STJ92967)

STJ92967

### GENERAL INFORMATION

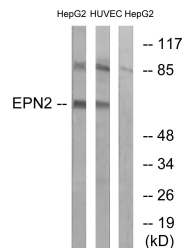
<b>Product Type</b>	Primary antibodies
<b>Short Description</b>	Rabbit polyclonal antibody anti-Epsin-2 (240-320 Internal) is suitable for use in Western Blot, Immunohistochemistry, Immunofluorescence and ELISA research applications.
<b>Applications</b>	WB, IHC-P, IF-P, ELISA
<b>Host/Source</b>	Rabbit
<b>Reactivity</b>	Human, Mouse, Rat

### PRODUCT PROPERTIES

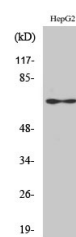
<b>Clonality</b>	Polyclonal
<b>Clone ID</b>	
<b>Concentration</b>	1 mg/mL
<b>Conjugation</b>	Unconjugated
<b>Purification</b>	The antibody was affinity-purified from rabbit anti-serum by affinity-chromatography.
<b>Dilution Range</b>	WB 1:500-1:2000 IHC 1:100-1:300 ELISA 1:20000
<b>Formulation</b>	PBS, 50% Glycerol, 0.5% BSA and 0.02% Sodium Azide.
<b>Isotype</b>	IgG
<b>Storage Instruction</b>	Store at -20°C for up to 1 year from the date of receipt, and avoid repeat freeze-thaw cycles.

### TARGET INFORMATION

<b>Gene ID</b>	22905
<b>Gene Symbol</b>	EPN2
<b>Uniprot ID</b>	EPN2_HUMAN
<b>Immunogen</b>	The antiserum was produced against synthesized peptide derived from human EPN2 at amino acid range 271-320
<b>Immunogen Region</b>	240-320 Internal
<b>Specificity</b>	EPN2 polyclonal antibody (Epsin-2) binds to endogenous Epsin-2 at the amino acid region 240-320 Internal.
<b>Immunogen Sequence</b>	



Western blot analysis of lysates from HepG2 and HUVEC cells, using EPN2 Antibody. The lane on the right is blocked with the synthesized peptide.



Western blot analysis of various cells using Epsin 2 Polyclonal Antibody diluted at 1: 1000