

Anti-EPN1 antibody (140-220 Internal) (STJ92966)

STJ92966

GENERAL INFORMATION

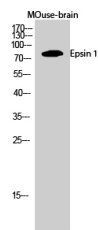
Product Type	Primary antibodies
Short Description	Rabbit polyclonal antibody anti-Epsin-1 (140-220 Internal) is suitable for use in Western Blot and ELISA research applications.
Applications	WB, ELISA
Host/Source	Rabbit
Reactivity	Human, Mouse, Rat

PRODUCT PROPERTIES

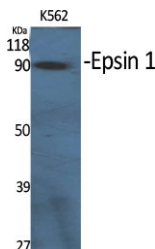
Clonality	Polyclonal
Clone ID	
Concentration	1 mg/mL
Conjugation	Unconjugated
Purification	The antibody was affinity-purified from rabbit anti-serum by affinity-chromatography.
Dilution Range	WB 1:500-1:2000 ELISA 1:40000
Formulation	PBS, 50% Glycerol, 0.5% BSA and 0.02% Sodium Azide.
Isotype	IgG
Storage Instruction	Store at -20°C for up to 1 year from the date of receipt, and avoid repeat freeze-thaw cycles.

TARGET INFORMATION

Gene ID	29924
Gene Symbol	EPN1
Uniprot ID	EPN1_HUMAN
Immunogen	Synthesized peptide derived from Epsin 1. at amino acid range: 140-220
Immunogen Region	140-220 Internal
Specificity	EPN1 polyclonal antibody (Epsin-1) binds to endogenous Epsin-1 at the amino acid region 140-220 Internal.
Immunogen Sequence	



Western blot analysis of M0use-brain cells using Epsin 1 Polyclonal Antibody diluted at 1: 1000



Western blot analysis of various cells using Epsin 1 Polyclonal Antibody diluted at 1: 1000

This product is suitable for in-vitro studies under the RESEARCH USE ONLY [RUO] licence. This product must not be used as for diagnostic or other medical purposes.
St John's Laboratory Ltd, Knowledge Dock Business Centre, University Way, London, E16 2RD | Tel: 0208 223 3081