

Anti-EPS8L3 antibody (370-450 Internal) (STJ92965)

STJ92965

GENERAL INFORMATION

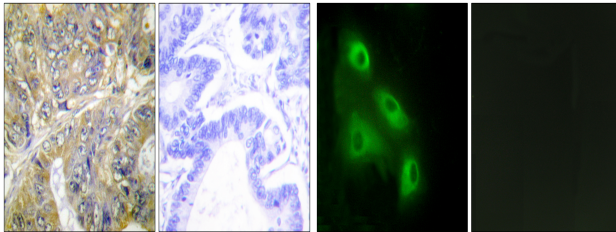
Product Type	Primary antibodies
Short Description	Rabbit polyclonal antibody anti-Epidermal Growth Factor Receptor Kinase Substrate 8-Like Protein 3 (370-450 Internal) is suitable for use in Immunohistochemistry, Immunofluorescence, Immunocytochemistry and ELISA research applications.
Applications	IHC-P, IF, ICC, ELISA
Host/Source	Rabbit
Reactivity	Human, Rat, Mouse

PRODUCT PROPERTIES

Clonality	Polyclonal
Clone ID	
Concentration	1 mg/mL
Conjugation	Unconjugated
Purification	The antibody was affinity-purified from rabbit anti-serum by affinity-chromatography.
Dilution Range	IHC 1:100-1:300 IF 1:200-1:1000 ELISA 1:10000
Formulation	PBS, 50% Glycerol, 0.5% BSA and 0.02% Sodium Azide.
Isotype	IgG
Storage Instruction	Store at -20°C for up to 1 year from the date of receipt, and avoid repeat freeze-thaw cycles.

TARGET INFORMATION

Gene ID	79574
Gene Symbol	EPS8L3
Uniprot ID	ES8L3_HUMAN
Immunogen Region	The antiserum was produced against synthesized peptide derived from human EPS8L3 at amino acid range 401-450
Specificity	370-450 Internal
Immunogen Sequence	EPS8L3 polyclonal antibody (Epidermal Growth Factor Receptor Kinase Substrate 8-Like Protein 3) binds to endogenous Epidermal Growth Factor Receptor Kinase Substrate 8-Like Protein 3 at the amino acid region 370-450 Internal.



Immunohistochemistry analysis of paraffin-embedded human colon carcinoma tissue, using EPS8L3 Antibody. The picture on the right is blocked with the synthesized peptide.

Immunofluorescence analysis of HeLa cells, using EPS8L3 Antibody. The picture on the right is blocked with the synthesized peptide.

This product is suitable for in-vitro studies under the RESEARCH USE ONLY [RUO] licence. This product must not be used as for diagnostic or other medical purposes.
St John's Laboratory Ltd, Knowledge Dock Business Centre, University Way, London, E16 2RD | Tel: 0208 223 3081