

Anti-EPS8L1 antibody (380-460 Internal) (STJ92963)

STJ92963

GENERAL INFORMATION

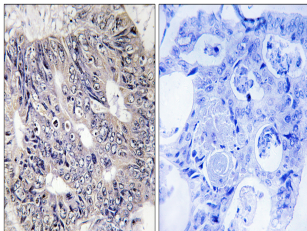
| | |
|--------------------------|---|
| Product Type | Primary antibodies |
| Short Description | Rabbit polyclonal antibody anti-Epidermal Growth Factor Receptor Kinase Substrate 8-Like Protein 1 (380-460 Internal) is suitable for use in Western Blot, Immunohistochemistry, Immunofluorescence, Immunocytochemistry and ELISA research applications. |
| Applications | WB, IHC-P, IF, ICC, ELISA |
| Host/Source | Rabbit |
| Reactivity | Human, Mouse |

PRODUCT PROPERTIES

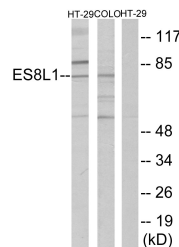
| | |
|----------------------------|--|
| Clonality | Polyclonal |
| Clone ID | |
| Concentration | 1 mg/mL |
| Conjugation | Unconjugated |
| Purification | The antibody was affinity-purified from rabbit anti-serum by affinity-chromatography. |
| Dilution Range | WB 1:500-1:2000 IHC 1:100-1:300 IF 1:200-1:1000 ELISA 1:20000 |
| Formulation | PBS, 50% Glycerol, 0.5% BSA and 0.02% Sodium Azide. |
| Isotype | IgG |
| Storage Instruction | Store at -20°C for up to 1 year from the date of receipt, and avoid repeat freeze-thaw cycles. |

TARGET INFORMATION

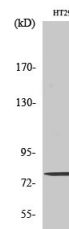
| | |
|---------------------------|---|
| Gene ID | 54869 |
| Gene Symbol | EPS8L1 |
| Uniprot ID | ES8L1_HUMAN |
| Immunogen | The antiserum was produced against synthesized peptide derived from human ES8L1 at amino acid range 411-460 |
| Immunogen Region | 380-460 Internal |
| Specificity | EPS8L1 polyclonal antibody (Epidermal Growth Factor Receptor Kinase Substrate 8-Like Protein 1) binds to endogenous Epidermal Growth Factor Receptor Kinase Substrate 8-Like Protein 1 at the amino acid region 380-460 Internal. |
| Immunogen Sequence | |



Immunohistochemistry analysis of paraffin-embedded human colon carcinoma tissue, using ES8L1 Antibody. The picture on the right is blocked with the synthesized peptide.



Western blot analysis of lysates from COLO205 and HT-29 cells, using ES8L1 Antibody. The lane on the right is blocked with the synthesized peptide.



Western blot analysis of various cells using Eps8L1 Polyclonal Antibody

This product is suitable for in-vitro studies under the RESEARCH USE ONLY [RUO] licence. This product must not be used as for diagnostic or other medical purposes.
St John's Laboratory Ltd, Knowledge Dock Business Centre, University Way, London, E16 2RD | Tel: 0208 223 3081