

## Anti-EPHB2 antibody (960-1040 C-Term) (STJ92951)

STJ92951

### GENERAL INFORMATION

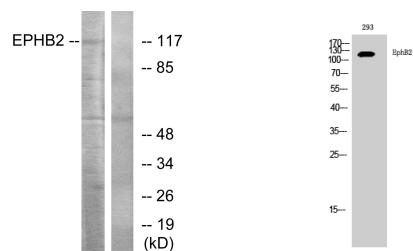
<b>Product Type</b>	Primary antibodies
<b>Short Description</b>	Rabbit polyclonal antibody anti-Ephrin Type-B Receptor 2 (960-1040 C-Term) is suitable for use in Western Blot, Immunohistochemistry, Immunofluorescence and ELISA research applications.
<b>Applications</b>	WB, IHC-P, IF-P, ELISA
<b>Host/Source</b>	Rabbit
<b>Reactivity</b>	Human, Rat, Mouse

### PRODUCT PROPERTIES

<b>Clonality</b>	Polyclonal
<b>Clone ID</b>	
<b>Concentration</b>	1 mg/mL
<b>Conjugation</b>	Unconjugated
<b>Purification</b>	The antibody was affinity-purified from rabbit anti-serum by affinity-chromatography.
<b>Dilution Range</b>	WB 1:500-1:2000 IHC 1:100-1:300 ELISA 1:5000
<b>Formulation</b>	PBS, 50% Glycerol, 0.5% BSA and 0.02% Sodium Azide.
<b>Isotype</b>	IgG
<b>Storage Instruction</b>	Store at -20°C for up to 1 year from the date of receipt, and avoid repeat freeze-thaw cycles.

### TARGET INFORMATION

<b>Gene ID</b>	2048
<b>Gene Symbol</b>	EPHB2
<b>Uniprot ID</b>	EPHB2_HUMAN
<b>Immunogen</b>	The antiserum was produced against synthesized peptide derived from human EPHB2 at amino acid range 991-1040
<b>Immunogen Region</b>	960-1040 C-Term
<b>Specificity</b>	EPHB2 polyclonal antibody (Ephrin Type-B Receptor 2) binds to endogenous Ephrin Type-B Receptor 2 at the amino acid region 960-1040 C-Term.
<b>Immunogen Sequence</b>	



Western blot analysis of lysates from Jurkat cells, using EPHB2 Antibody. The lane on the right is blocked with the synthesized peptide.

Western blot analysis of 293 cells using EPHB2 Polyclonal Antibody diluted at 1: 1000