

## Anti-EPHA7 antibody (420-500 Internal) (STJ92946)

STJ92946

### GENERAL INFORMATION

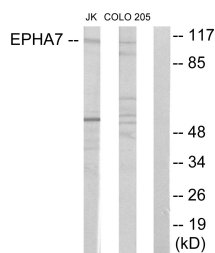
<b>Product Type</b>	Primary antibodies
<b>Short Description</b>	Rabbit polyclonal antibody anti-Ephrin Type-A Receptor 7 (420-500 Internal) is suitable for use in Western Blot, Immunohistochemistry, Immunofluorescence and ELISA research applications.
<b>Applications</b>	WB, IHC-P, IF-P, ELISA
<b>Host/Source</b>	Rabbit
<b>Reactivity</b>	Human, Mouse, Rat

### PRODUCT PROPERTIES

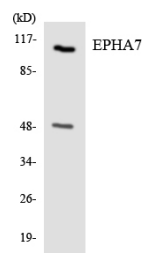
<b>Clonality</b>	Polyclonal
<b>Clone ID</b>	
<b>Concentration</b>	1 mg/mL
<b>Conjugation</b>	Unconjugated
<b>Purification</b>	The antibody was affinity-purified from rabbit anti-serum by affinity-chromatography.
<b>Dilution Range</b>	WB 1:500-1:2000 ELISA 1:40000
<b>Formulation</b>	PBS, 50% Glycerol, 0.5% BSA and 0.02% Sodium Azide.
<b>Isotype</b>	IgG
<b>Storage Instruction</b>	Store at -20°C for up to 1 year from the date of receipt, and avoid repeat freeze-thaw cycles.

### TARGET INFORMATION

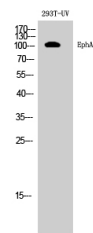
<b>Gene ID</b>	2045
<b>Gene Symbol</b>	EPHA7
<b>Uniprot ID</b>	EPHA7_HUMAN
<b>Immunogen</b>	The antiserum was produced against synthesized peptide derived from human EPHA7 at amino acid range 451-500
<b>Immunogen Region</b>	420-500 Internal
<b>Specificity</b>	EPHA7 polyclonal antibody (Ephrin Type-A Receptor 7) binds to endogenous Ephrin Type-A Receptor 7 at the amino acid region 420-500 Internal.
<b>Immunogen Sequence</b>	



Western blot analysis of lysates from Jurkat cells and COLO205 cells, using EPHA7 Antibody. The lane on the right is blocked with the synthesized peptide.



Western blot analysis of the lysates from HeLa cells using EPHA7 antibody.



Western blot analysis of 293T-UV cells using EPHA7 Polyclonal Antibody diluted at 1: 500.