

Anti-EPHA3 antibody (800-880 C-Term) (STJ92943)

STJ92943

GENERAL INFORMATION

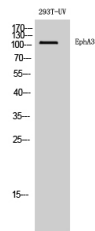
Product Type	Primary antibodies
Short Description	Rabbit polyclonal antibody anti-Ephrin Type-A Receptor 3 (800-880 C-Term) is suitable for use in Western Blot and ELISA research applications.
Applications	WB, ELISA
Host/Source	Rabbit
Reactivity	Human, Mouse, Rat

PRODUCT PROPERTIES

Clonality	Polyclonal
Clone ID	
Concentration	1 mg/mL
Conjugation	Unconjugated
Purification	The antibody was affinity-purified from rabbit anti-serum by affinity-chromatography.
Dilution Range	WB 1:500-1:2000 ELISA 1:40000
Formulation	PBS, 50% Glycerol, 0.5% BSA and 0.02% Sodium Azide.
Isotype	IgG
Storage Instruction	Store at -20°C for up to 1 year from the date of receipt, and avoid repeat freeze-thaw cycles.

TARGET INFORMATION

Gene ID	2042
Gene Symbol	EPHA3
Uniprot ID	EPHA3_HUMAN
Immunogen	The antiserum was produced against synthesized peptide derived from human EPHA3 at amino acid range 831-880
Immunogen Region	800-880 C-Term
Specificity	EPHA3 polyclonal antibody (Ephrin Type-A Receptor 3) binds to endogenous Ephrin Type-A Receptor 3 at the amino acid region 800-880 C-Term.
Immunogen Sequence	



Western blot analysis of 293T-UV cells using EphA3 Polyclonal Antibody diluted at 1: 500