

Anti-EPHA3 antibody (540-620) (STJ92942)

STJ92942

GENERAL INFORMATION

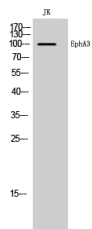
Product Type	Primary antibodies
Short Description	Rabbit polyclonal antibody anti-Ephrin Type-A Receptor 3 (540-620) is suitable for use in Western Blot and ELISA research applications.
Applications	WB, ELISA
Host/Source	Rabbit
Reactivity	Human, Mouse, Rat

PRODUCT PROPERTIES

Clonality	Polyclonal
Clone ID	
Concentration	1 mg/mL
Conjugation	Unconjugated
Purification	The antibody was affinity-purified from rabbit anti-serum by affinity-chromatography.
Dilution Range	WB 1:500-1:2000 ELISA 1:10000
Formulation	PBS, 50% Glycerol, 0.5% BSA and 0.02% Sodium Azide.
Isotype	IgG
Storage Instruction	Store at -20°C for up to 1 year from the date of receipt, and avoid repeat freeze-thaw cycles.

TARGET INFORMATION

Gene ID	2042
Gene Symbol	EPHA3
Uniprot ID	EPHA3_HUMAN
Immunogen	Synthesized peptide derived from EphA3. at amino acid range: 540-620
Immunogen Region	540-620
Specificity	EPHA3 polyclonal antibody (Ephrin Type-A Receptor 3) binds to endogenous Ephrin Type-A Receptor 3 at the amino acid region 540-620.
Immunogen Sequence	



Western blot analysis of JK cells using EphA3 Polyclonal Antibody

This product is suitable for in-vitro studies under the RESEARCH USE ONLY [RUO] licence. This product must not be used as for diagnostic or other medical purposes.
St John's Laboratory Ltd, Knowledge Dock Business Centre, University Way, London, E16 2RD | Tel: 0208 223 3081